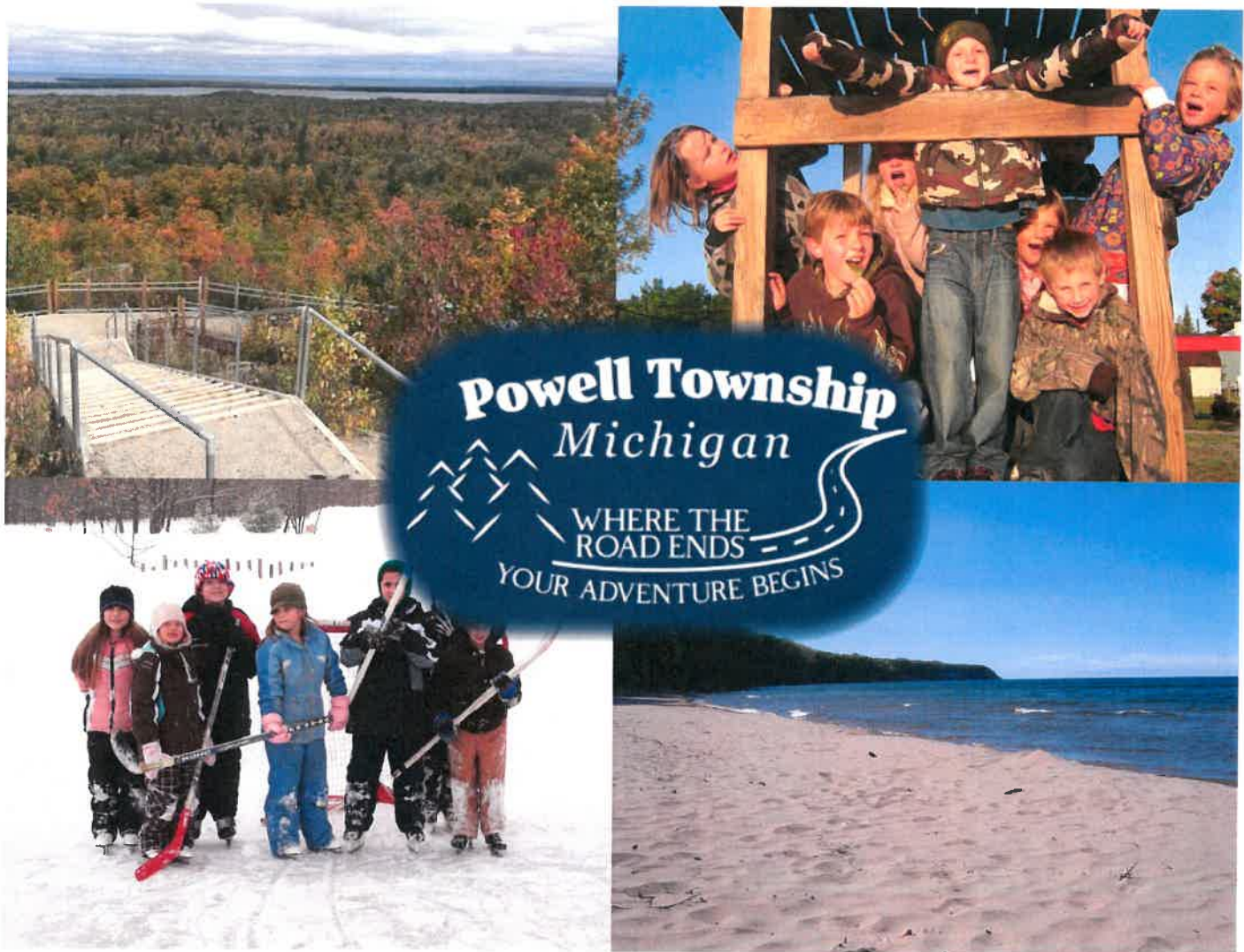


Powell Township Parks & Recreation Plan

2020-2025



Powell Township
Michigan
WHERE THE
ROAD ENDS
YOUR ADVENTURE BEGINS



Central Upper Peninsula Planning And Development Regional Commission

Powell Township Recreation Plan

2020 - 2025

Township Board

Darlene Turner (Supervisor)
Daryl Wilcox (Deputy Supervisor)
Samantha Morin (Clerk)
Leah Fraley (Deputy Clerk)
Arlene Erickson (Treasurer)
Kelly Santilli (Deputy Treasurer)
Howard Robare (Trustee/Zoning Administrator)
Denise Hudson (Trustee)
Joe Stanley (Trustee)

Parks and Recreation Committee

Sven Gonstead (Chair)
Jill Bevins (Secretary)
Darlene Turner (Treasurer)
Arline Erickson (Member)
Lucy Wilcox (Member)
George Girod (Member)
Heidi Shatz (Member)

Adopted by the Township Board on January 21st, 2020

Table Of Contents

1.0	Introduction.....	4
2.0	Community Description	5
3.0	Administrative Structure.....	7
4.0	Natural Resources Inventory	8
5.0	Recreation Inventory	9
6.0	Planning & Public Participation.....	16
7.0	Goals & Objectives.....	19
8.0	Action Plan.....	21

Appendix A - Budget

Appendix B - Public Input

Appendix C - Minutes, Resolutions, Checklist

Appendix D - Map of Recreation Facilities

Appendix E - Reports

1

Introduction

This Parks & Recreation Plan is a guide for the upkeep and future development of parks and recreational facilities for the community of Powell Township. The development of this plan was initiated by the Powell Township Board of Trustees upon the recommendation of the Powell Township Recreation Committee. In 2019 this plan was updated with revised goals and strategies that will allow the Powell Township Officials to continue to invest wisely and strategically in their recreational assets. The revised goals and strategies in this plan are the results of several community input sessions. Some of those sessions were prompted around this 5- year recreation plan and included a student survey at the school and a community open house and public input session. Other community input sessions resulted from the Center for Responsible Travel (CREST), brought to Powell Township from the Lundin Foundation to grow the economic resiliency of Powell Township with sustainable, recreational tourism, through marketing and branding as the Lundin owned Eagle Mine prepares for its eventual closure.

The Michigan Department of Natural Resources (DNR) also informs the content of this plan. Five-year recreation plans, developed according to the DNR requirements, are eligible to apply for grant assistance to improve their public parks and recreation facilities. These competitive grants offer a significant financial boost to communities that are trying to improve their recreation assets on limited resources. Historically, Powell Township has been very successful in applying for and administering DNR grants. Burns Landing is the most recent example.



Powell Township School students skiing

The plan contains a description of the community, an overview of the parks and recreation administrative structure and budget, and an inventory of existing recreational facilities. This background information provides a basis for the goals and objectives developed by the Recreation Committee with input from the public. Finally, the plan contains an action program that identifies how Powell Township will work towards these goals and objectives over the next five years. This plan update will provide the Powell Township Recreation Committee and the Powell Township Board with the goals and strategies they need to continue to invest wisely and strategically in their recreational assets.

2

Community Description

For the purposes of this plan, the “community” is defined as the area encompassed by Powell Township’s political boundaries. Powell Township is in the northern half of Marquette County.



Lumberjack Tavern - A Powell Township landmark

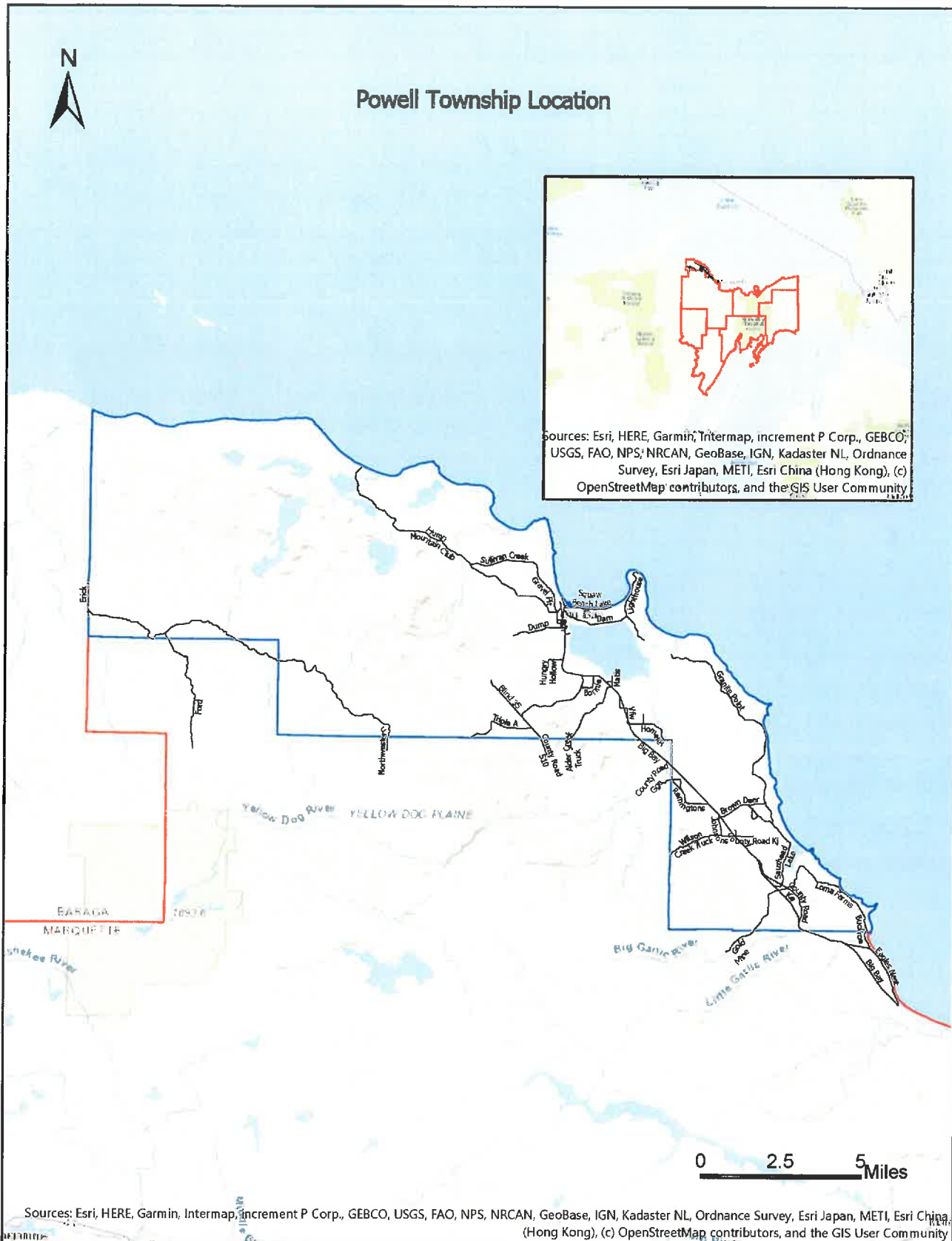
Powell Township was established in 1904. Like many communities in the Upper Peninsula, the Township’s development was closely related to the natural resources available in the area. Logging and wood product industries were mainstays of the local economy throughout the Township’s history.

According to the 2010 Census, the Township has a population of 816 with about 70% being year round residents. The Township has several lakes and rivers ideal for recreation and approximately 45 miles of Lake Superior shoreline.

Comparative Census Data

	Powell Township		Marquette County	
	2000	2010	2000	2010
Population	724	816	64,634	67,077
% of Population 65 & older	17.0	22.3	13.5	14.7
% of Population under 18	17.5	11.9	21.4	18.7
Median age	46.1	53.7	37.5	39.4
% Bachelor’s degree or higher	12.5	14.6	15.9	20.7
Median household income	\$34,659	\$52,546	\$35,548	\$45,130
Per Capita Income	\$19,391	\$25,492	\$18,070	\$23,347
Average household size	2.17	1.93	2.35	2.26
Median housing value	\$69,700	\$103,500	\$77,200	\$125,100

Source: U.S. Census Bureau, 2000 & 2010; *2020 Census will be updated Spring 2021

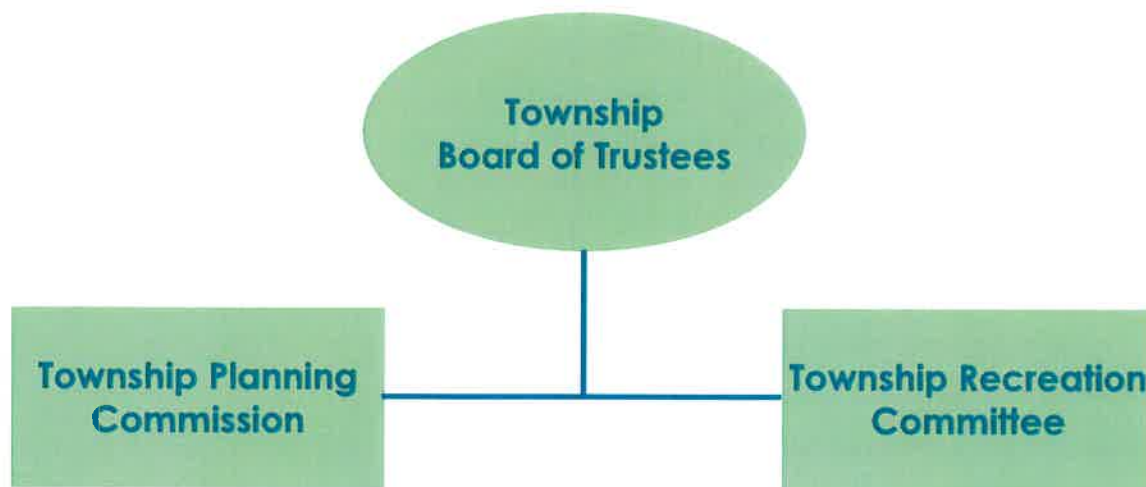


3

Administrative Structure

ORGANIZATION

The Powell Township Board established an eight member recreation committee comprised of volunteers that meets monthly according to a published schedule. The Recreation Committee is responsible for recommendations relating to maintenance, operation, and expansion of the Township's recreation facilities and programs. The recommendations of the Recreation Committee are acted on by the Township Board and are also coordinated with the Planning Commission. The Powell Township Organization Chart is below.



The Powell Township School is an integral part of Powell Township and the community of Big Bay. The school is a participant in township government-based decisions, and the Recreation Committee often seeks ways to further recreational opportunities for its students. The most recent example is the trail development from the Powell Township School to the Big Bay Pathway.

RECREATION BUDGET

Funding for the Township recreation facilities and programs is through the Township's General Fund. The budget for 2020 is included in Appendix A. Special projects are appropriated as necessary and may be supplemented with donations and grants.

ROLE OF VOLUNTEERS

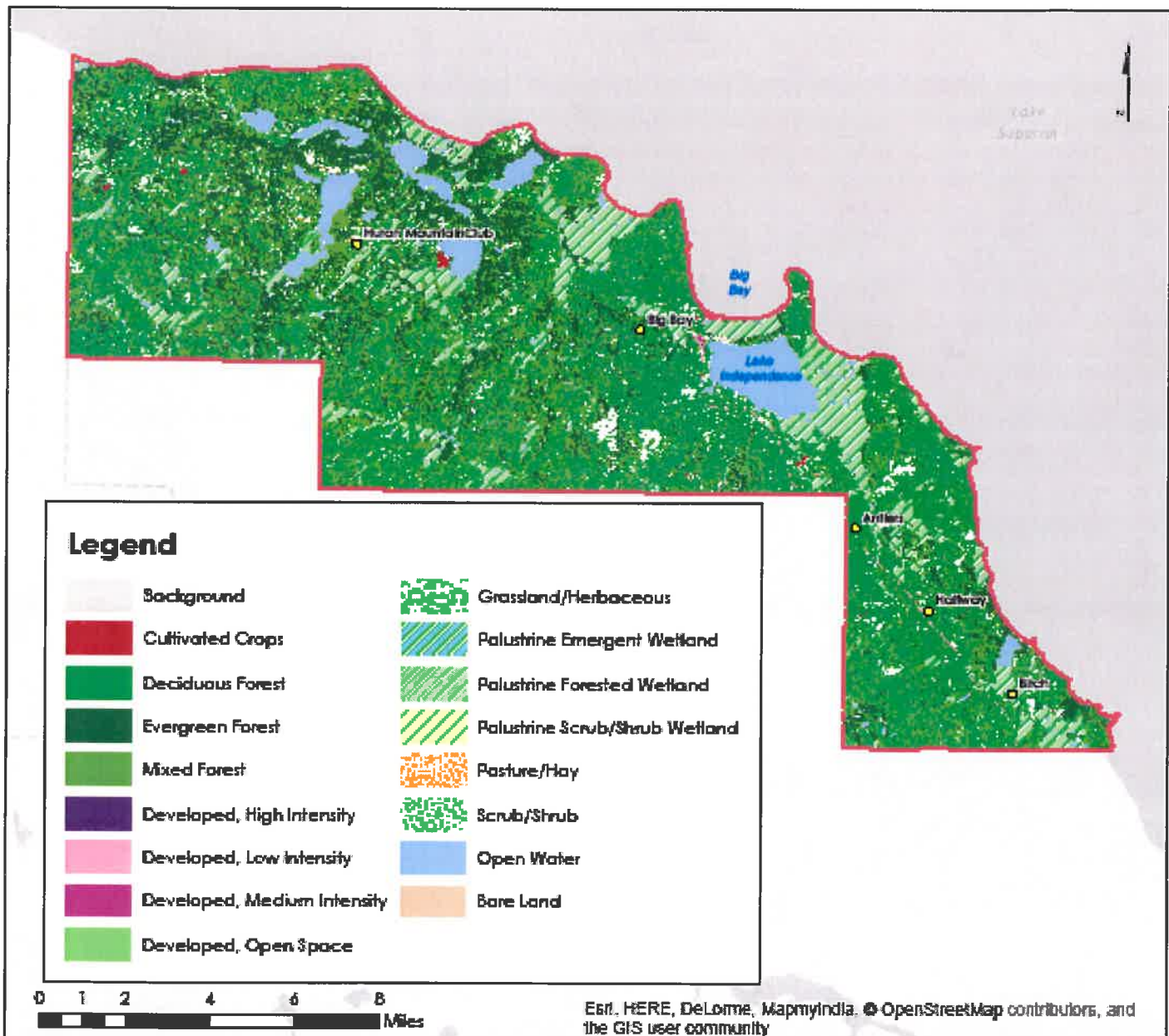
In addition to a volunteer-supported Recreation Committee, the Township's recreation projects rely on the time and generosity of many committed citizen volunteers. Volunteers step in to help during the most demanding times of the year, such as spring and fall.

4

Natural Resource Inventory

Powell Township is largely forested with miles of very high quality trout streams and old growth forest. The majority of this property is privately owned as large parcels managed for timber production. Many of these parcels are enrolled in the Commercial Forest Act and are available to the public for recreation. A number of other large land holdings also contribute to the pristine nature of the Township's land cover, including the Huron Mountain Club and the Yellow Dog Watershed Preserve. The Blue Ribbon trout waters of the Yellow Dog River and the Salmon-Trout River are located within the Township's Boundary.

Powell Township Land Cover



5

Recreation Inventory

Powell Township's Recreation Inventory includes a description of each facility along with its classification and accessibility rating. A list of nearby parks and recreation facilities is also included, as Township residents often travel to the City of Marquette and beyond for more options.

PARK CLASSIFICATION

Mini-Park: A park containing specialized facilities that serve a concentrated or limited population or specific group such as tots or the elderly. These are usually between 2,500 sq. ft. and one acre in size.

Neighborhood Park/Playground: An active recreation site incorporating one or more open space areas designed for field sport and providing play apparatuses. The open space areas should be able to serve the needs of both youth and adults. A baseball field with adjoining playground and restrooms would be an example of a neighborhood park. They are generally 5 to 10 acres in size and serve a 1/4 to 1/2 mile distance.

Community Park/Recreation Area: Area of diverse environmental quality. It may include areas suited for intense recreational facilities such as athletic complexes and large swimming pools or an area of natural quality for outdoor recreation such as walking, viewing, sitting, and picnicking. They are usually between 30 and 50 acres in size and serve a radius of 1/2 to 3 mile distance.

Regional Park/Recreation Area: Area of natural or ornamental quality for outdoor recreation, such as picnicking, boating, fishing, swimming, camping, and trail uses. It may include play areas. These types of facilities are usually greater than 50 acres and tend to attract individuals from outside the community.

ACCESSIBILITY RATINGS

Each of the parks and recreation areas are described in general terms with their level of accessibility rated according to the DNR guidelines below as compared to the 2010 ADA Standards for Accessible Design. Accurate rates for Thomas Rock and Draver Park were achieved by individual park evaluations performed by the Superior Alliance for Independent Living (SAIL) Ambassadors led by Lucy Wilcox, SAIL ADA Coordinator. In addition to DNR required ratings, the SAIL ADA Reports go further to make recommendations for improved accessibility on individual park elements such as parking, playgrounds, pavilions, restroom, etc.

Accessibility Ratings

Accessibility Rating	Definition
1	None of the facilities/park areas meet accessibility guidelines.
2	Some of the facilities/park areas meet accessibility guidelines.
3	Most of the facilities/park areas meet accessibility guidelines.
4	The entire park meets accessibility guidelines.
5	The entire park was developed/renovated using universal design principles.

TOWNSHIP-OWNED FACILITIES

The following parks are owned and operated by Powell Township.

Draver Park: This park occupies approximately 3/4 of a city block in Big Bay and is adjacent to residential land use. It is on the western edge of the community and includes one softball field, a pavillion, a playground, picnic sites, a concession stand, as well as a storage building with restrooms. Draver Park is near the Powell Township Elementary School and is available for student use.

Draver Park was built in the 1980s before the 1991 ADA standards were put in place. Bringing Draver Park up to today's accessibility standards all at once would require a significant amount of resources.

- *Type:* Neighborhood Park
- *Accessibility Rating:* 2
- *MDNR Grant History:* N/A



Draver Park

Burns Landing: Powell Township owns 3.85 acres of land on the Lake Superior shoreline just west of the Big Bay Harbor. The historic LeClair Cabin was one of the first buildings built in the Township, and is well over 100 years old. Recent improvements at the site include a handicapped-accessible toilet placed at the edge of a gravel parking area, an accessible boardwalk built between the restored cabin and the beach, and installation of benches and grills. This site also includes Squaw Beach, a popular swimming area on Lake Superior. The beach is unguarded and undeveloped, but receives significant use.

- *Type:* Community Park
- *Accessibility Rating:* 2
- *MDNR Grant History:* 2015 grant for development (\$45,000); 2016 grant for access improvements (\$168,000).



Cabin at Burns Landing

Thomas Rock: Locally known as “Gobbler’s Knob”, Thomas Rock began as a 10- acre site along CR 510 was donated to Powell Township for recreational use. The Township acquired 379 acres of forest land around the original site in 2010 through a grant to protect wildlife habitat and extend the existing trail system. This park is one of the jewels of the region, with spectacular panoramic views of the Huron Mountains, Lake Superior, and Lake Independence. The site has been developed as an overlook area with fence and guardrails installed, wide pathways, gentle slopes, as well as accessible restroom facilities, a picnic area, and non-motorized trails. The park also has good signage directing people to the trails and creative, interpretive signage that identifies some of the existing plant species along the pathways.



View at Thomas Rock

- *Type:* Regional Park/Recreation Area
- *Accessibility Rating:* 5
- *MDNR Grant History:* 2009 grant to develop hiking trail, picnic area, and restrooms (\$319,100); 2010 grant to purchase 419 additional acres of land surrounding Thomas Rock.

Halfway Ball Field: The Township owns 28 acres at the Halfway location at the intersection of Brown Deer Road and County Road 550. This natural resource area was once the site of a softball field. However, as the fields have not been used for some time and they are no longer maintained and is considered an undeveloped natural area.

- *Type:* Neighborhood Park
- *Accessibility Rating:* 1
- *MDNR Grant History:* N/A

Halfway Fire Hall Playground: This park is adjacent to the Township’s Fire Hall near the Halfway location on County Road 550. The park includes playground equipment and serves the youth at the residential cluster near the Township’s southern border.

- *Type:* Mini-Park
- *Accessibility Rating:* 3
- *MDNR Grant History:* N/A



Halfway Fire Hall

OTHER FACILITIES WITHIN THE TOWNSHIP

In addition to the parks listed above, Powell Township is home to the following recreation facilities:

Perkins Park: This 71-acre county park is located on the western shore of Lake Independence in the community of Big Bay. The park includes 76 campsites, 50 with electricity, and 37 of those sites with full hookups. The remaining 24 sites are intended for rustic camping. The campground is well-developed and maintained including a swimming beach, playground, restrooms, bathhouse with showers, pavilion, boat launch, boardwalk with observation decks, fishing pier and fish cleaning station.



Perkins Park at Lake Independence

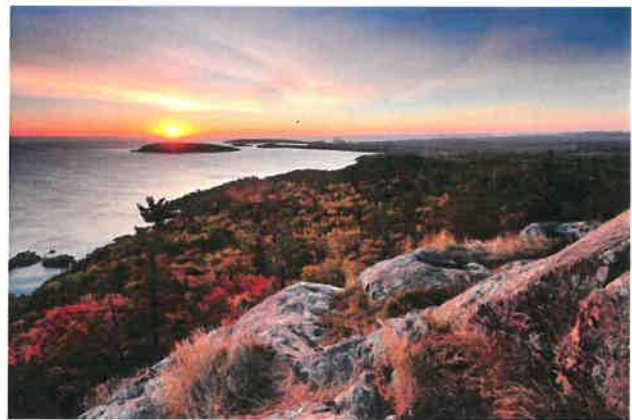
Big Bay Harbor of Refuge: Located just north of Big Bay on Lake Superior, the Big Bay Harbor offers transient dockage, fuel, water, restrooms and showers, holding tank pump-out, a public telephone, launch ramp and parking. The harbor has a 275-foot long sheet pile and concrete mooring bulkhead with ten slips. Since 1998, improvements have included shoreline stabilization, dredging, bulkhead extension, subsidence correction, and renovation of walkways and finger piers. Marquette County owns and operates the harbor.



Docks at Harbor of Refuge

Powell Township School: The Powell Township School is located at 101 Deutsch Avenue in Big Bay. Recreational facilities available at the school include a playground, two tennis courts, a basketball court, and the school gym. Powell Township School won a 2011 Educational Excellence award.

Sugar Loaf Mountain Natural Area: A 3,200-foot trail of pathway, and stair segments that lead to the summit 470 feet above Lake Superior. Sugarloaf Mountain is easy to access from County Road 550. The trails are safe and easy to follow with little chance of becoming turned around, making Sugarloaf a favorite for visitors to the area that are capable to climb. Once at the top, the view is rewarding. Sugarloaf Mountain is owned by Marquette County and connects to the Escanaba River State Forest, which includes popular sites such as Hogsback Mountain, Wetmore's landing, Harlow Lake and Little Presque Isle. Each of these sites are linked together with trails.



Sunrise at Sugar Loaf Mountain

Huron Mountain Club (Private): The Huron Mountain Club was formed in the early 1890s by a group of prominent Marquette residents. The families built cabins and a lodge at the mouth of the Pine River and used the Club as a summer vacation retreat. In the early 1900s the Huron Mountain Club was reorganized and memberships were held primarily by wealthy families outside Marquette County. The Huron Mountain Club remains in existence today, and owns nearly 26,000 acres in Powell Township. All Club holdings are limited to access by members only; however, the Club does attract many visitors to the area and provides employment to area residents.



Huron Mountain Club

Big Bay Sportsman Club: The Big Bay Sportsman Club has a clubhouse with electricity and bathroom facilities on 80 acres of land on County Road 550. Each year the club sponsors a very popular fishing derby on Lake Independence. Proceeds from the event go toward re-stocking the fish in Lake Independence. The club also teaches firearm safety and snowmobile safety classes, and maintains a rifle range for the use of club members.

Yellow Dog Preserve: The Yellow Dog Preserve is run by a local group actively working to preserve the Yellow Dog River in its natural state. Along with a variety of educational programs, the group is seeking opportunities to purchase property and/or establish conservation easements along the river. Currently the group owns 160 acres in the Township at the mouth of the Yellow River. This tract, the Jean Farwell Wilderness, is a protected area and is open for public use.

In addition to these sites, which have been developed to some extent, the Township contains vast amounts of land open to hunting and fishing. Lands designated as Commercial Forest Reserve (CFR), while remaining in private ownership, must be open to the public for hunting and fishing. These lands, together with the state land in the Township, provide further recreational opportunities to residents and visitors alike.

TRAILS

Big Bay Pathway: The Big Bay Pathway, located on the western edge of Big Bay off of Dump Road, is part of the Noquemanon Trail Network (NTN). NTN is a non-profit membership-based organization whose mission is to secure, develop, maintain and promote the use of non-motorized trail networks throughout the Central Upper Peninsula. The trail system offers three backcountry skiing loops for beginners, intermediate and expert skiers with a combined total of 16 kms of trail.



Big Bay Pathway in winter

Saux Head Trails: This trail system is approximately 12 kms of non-motorized trails located in Powell Township, about 14 miles north of the City of Marquette off County Road 550. The Saux Head trails wind through towering old growth white pines and hemlocks around Saux Head Lake. The trails are moderately challenging and offer skiing, biking, hiking, depending on the season. Dogs are welcome on a leash per Michigan law.

Big Bay 550 Snowmobile Club Trails: Snow is an abundant recreational asset in Powell Township. The townships large tracts of undeveloped land offer extended riding opportunities. Many of the trails utilize Commercial Forest Act (CFA) lands and road right of ways. The Big bay 550 Snowmobile Club, located in Big Bay, maintains 70-140 miles of snowmobile trails. These trails connect to other snowmobile trails maintained by other snowmobile trail organizations and comprise the U.P. wide snowmobile trail system developed by the Michigan Department of Natural Resources.



Snowmobile

Powell Township's steep terrain and many rivers combine to form many waterfalls, some of which are relatively large. While some waterfalls are within Huron Mountain Club holdings and are not easily accessible to the public, others, such as Alder Falls near Big Bay are readily accessible. Some falls located on public or CFR lands require driving and/or hiking for several miles.

Powell Township and surrounding areas are very popular with snowmobilers. The Lake Superior snowbelt tends to have more reliable snow cover than other parts of the U.P. and Powell Township offers large tracts of relatively undeveloped land. Many trails crisscross the area and connect with Baraga County to the west, Marquette to the southeast, and Ishpeming and Negaunee to the south. These trails utilize CFR lands as well as road rights of ways. The 550 Snowmobile Club, based in Big Bay, maintains 70-140 miles of snowmobile trails, which connect the trails maintained by other organizations.

NEARBY RECREATION FACILITIES

Residents and tourists in Powell Township area also served by a wide variety of parks, beaches, lakes, rivers, and trails in Marquette County. Highlights include the Marquette Mountain downhill ski area, Sugarloaf Mountain scenic viewing area, Presque Isle Park on the shores of Lake Superior, and Tourist Park campground on the Dead River. In addition to these regional outdoor recreation facilities, many Powell Township residents use indoor facilities which are unavailable in the Township such as the YMCA and Lakeshore Arena ice rink. The Iron Ore Heritage Trail, North Country Trail, and Noquemanon Trail Network provide hiking, biking, and cross-country skiing opportunities throughout the County.

North on County Road 550 from the City of Marquette to Big Bay, there are abundant natural areas for recreation seekers. Hiking and biking trails lead to natural features and spectacular views of Lake Superior such as the Sugar Loaf Mountain Natural Area, a 3,200 foot trail of pathway, and stair segments that lead

to the summit 470 feet above Lake Superior. Sugarloaf Mountain connects to the Escanaba River State Forest, which includes popular sites such as Hogsback Mountain, Wetmore's landing, Harlow Lake, and Little Presque Isle. Each of these sites are linked together with trails.

The 2020-2024 Marquette County Recreation Plan contains more detailed information about facilities outside the Township, and is available for viewing on the County's website at:
<http://www.co.marquette.mi.us>.



Presque Isle Park

6

Planning & Public Participation

The development of the goals and objectives in this plan were guided by standards created by the National Recreation and Park Association (NRPA) and the input of community members and local officials. This chapter contains information about the planning and public input process.

RECREATION NEEDS STANDARDS

Standards developed by the National Recreation and Park Association (NRPA) provide a scale against which an existing recreation system can be measured so that guidelines for future needs can be created. These standards compare available parks and recreation acreage to community population. However, it is important to keep in mind that many communities find that their need for recreational opportunities and open space can be met by facilities in nearby communities, while in some instances a community may be providing recreational opportunities and open space for neighboring communities. For example, regional parks containing large tracts of undeveloped land are usually found in rural areas, but fulfill a need extending far beyond the boundaries of a single rural community. Conversely, residents of small communities often access recreation facilities such as swimming pools or fitness centers in nearby urban areas. It should also be recognized that some sites represent unique environmental features or historical sites which in themselves are worthy of protection and designation, over and above any applicable standards.

Local and Regional Recreation Open Space Standards

Park Type	Service Area	Size (Acres)	Acres/1,000 pop.
Mini-Park	<1/4 mile radius	1 or less	0.25 - 0.50
Neighborhood Park	1/4 to 1/2 mile radius	15+	1.0 to 2.0
Community Park	Several neighborhoods; 1 to 2 mile radius	25+	5.0 to 8.0
Regional Park	Several communities; within 1 hour driving time	200+	5.0 to 10.0

Source: Roger A. Lancaster, Ed. 1983, Recreation, Park and Open Space Standards and Guidelines, Alexandria, Virginia: National Recreation and Park Association.

A community's park system under NRPA standards should have a minimum of 6.25 to 10.50 total acres of developed open space per 1,000 residents of population. With a population of less than 1,000, the standards indicate that the Township should provide between 0.25 to 0.5 acres of mini parks, one to two acres of neighborhood parks, five to eight acres of community parks, and five to 10 acres of regional parks to meet this minimum standard.

Powell Township possesses nearly 500 acres of publicly-owned recreational land. The NRPA standards

would appear to indicate that the Township has excessive park acreage. However, Powell Township is very dependent on the tourism industry, which in turn is attracted to the area because of its natural beauty. The area provides recreational opportunities to a population outside its boundaries, and has a legitimate interest in maintaining accessibility to natural features. The Township should work with Marquette Township and other surrounding townships in promoting the tourism attributes of the area.

Existing Public Open Space

Type of Park	Park Land Area (Acres)	Land Area Standard (Acres)
Mini Parks		
Halfway Fire Hall Playground	0.50	
<i>Subtotal</i>	0.50	0.25 to 0.50
Neighborhood Parks		
Draver Park	3.60	
Halfway Ball Field	28.00	
<i>Subtotal</i>	31.60	1.00 to 2.00
Community Parks		
Burns Landing	3.85	
<i>Subtotal</i>	3.85	5.00 to 8.00
Regional Parks		
Thomas Rock	389.00	
Perkins Park	71.00	
<i>Subtotal</i>	460.00	5.00 to 10.00
Total Park Area	495.95	11.25 to 20.50

Source: Roger A. Lancaster, Ed. 1983, Recreation, Park and Open Space Standards and Guidelines, Alexandria, Virginia: National Recreation and Park Association.

PUBLIC PARTICIPATION PROCESS

Powell Township has been planning around their outdoor recreation assets for a long time. They recognize the abundant and beautiful natural resources they have as a quality-of-life advantage and a marketable resource. They also value preservation, conservation, and sustainability while desiring to retain their unique identity as a community. To accomplish this they are collaborating with the Center for Responsible Travel (CREST) to market their recreational assets to the type of visitors that share those same values. Proper marketing and branding will be essential to Powell Township as they continue to grow to become a recreation destination that provides exceptional recreational opportunities to residents and visitors while preserving its authenticity.

In preparation of this five-year recreation plan, Powell Township wanted to hear from their youth. They wanted to know how the local youth view the Township's efforts in recreation development and what they think the Township can do to improve their recreation experience. To accomplish that, a survey

was distributed to students in grades 5 through 8 at the Powell Township School requesting information about the sites they like to visit that are owned by the Township, what their favorite recreational activities are, and what improvements they would like to see made to the recreation sites in Powell Township. Student responses are reflected in the goals, objectives, and strategies of this plan and a summary of the survey results are in Appendix B.

Other recreation planning includes the Township's development of a multi-phase strategic plan to help the Powell Township Recreation Committee and Township Board identify and pursue recreation projects that will continue to move the Township's recreation goals forward.

Additional public input was gathered during an Open House event hosted by the Powell Township Recreation Committee before the required 30-day public review period. All public comments received have been incorporated into the final plan.



Example of an accessible trail



Powell Township has ample land for silent sports such as snowshoeing

7

Goals & Objectives

Powell Township used the guidelines and public input described in Chapter 6 to develop the following goals objectives, and strategies. The Chapter 8 “Action Plan” contains the projects that will be implemented to achieve these goals.

GOAL 1:

Powell Township Will Have The Type Of Recreation Facilities And Recreation Related Services That Enhance Their Local Economy While Retaining Their Authentic Community Spirit.

Objective:

Continue to improve and develop recreation facilities that support tourism within the Township and seek opportunities to link Powell Township and its recreational assets to other communities in Marquette County.

Strategies:

- Market the Parks and Recreation Committee programing and events to other communities in the region.
- Support and encourage business development that fosters recreation and tourism.
- Seek opportunities to expand and connect with neighboring recreation facilities by reaching out to other local units of government and the State of Michigan to explore opportunities.
- Develop single-track trails on County Road 510 property with consideration for connecting to neighboring township trails.
- Seek opportunities to collaborate in the development of a year-round non-motorized trail that is groomed for skiing and snow biking, while also allowing for hiking and biking from the city of Marquette to Big Bay.
- Collaborate with Marquette County to allow a local business to provide bicycles for kayakers and boaters visiting Big Bay Harbor of Refuge.
- Develop bike paths throughout the Big Bay community with low lighting.
- Provide ample and creative way-finding signage for visitors to the community of Big Bay.
- Work with Marquette County to expand their policies to allow private recreation-based businesses to market their products in County-owned parks such as paddle boats and kayaks.
- Develop a community building that would serve as a welcome center, art center, and gathering



Kayaking in Big Bay

location that provides the following information and services such as information about the various parks and trails, lodging and restaurants, parks and trails and other community amenities.

- Seek sustainable ways to support recreation, arts, and trails operations.
- Develop a disk golf course on Powell Township property.
- Develop a Pump Track.

GOAL 2:

Powell Township will have neighborhood parks that are accessible and respond to the needs and desires of their residents and visitors.

Objective:

Increase the quality and availability of recreational facilities for all ages and physical abilities.

Strategies:

- Improve communication with all citizens and provide them with the opportunity to comment on the Township's recreation facilities.
- Seek the resources needed to bring Draver Park in compliance with the 2010 ADA Standards for Accessible Design.
- Continue to involve Superior Alliance for Independent Living (SAIL) in the design and construction of all Powell Township recreation facilities.
- Work with the students of Powell Township School and other community focused organizations to improve the playground and ballfield at the Halfway location.



Kids Enjoying an Inclusive Playground

8

Action Plan

This action plan is intended to be a living document that is revisited by the Powell Township Recreation Committee annually to help guide the Committee on their goals to continue to improve the Township's parks and trail systems.

Ideally, the Chair of the Powell Township Recreation Committee will place the Update of the Action Plan on the agenda on or about the same time each year so the Recreation Committee can adjust the plan as needed according to known costs, funding availability, and new opportunities for recreation growth.

Parks Projects	Estimate	Timeframe	Funding Source
Draver Park: Develop a community building that will include a fire pit and other community services. Update parking, restrooms, and playground equipment with recommended accessibility improvements included in SAIL Report.	\$300,000	2020-2023	Powell Township, DNR
Halfway Park and Ball Field: Work with students and their parents at the Halfway Location to develop feasible improvements to the park. Seek volunteer assistance. Develop plans and cost estimates for improvements to Halfway Location such as a Disk Golf Course and Pump Track.	TBD	2020-2022	Powell Township, Marquette County Community Foundation, Donations
LeClair Cabin: Complete according to current grant requirements.	NA	2020-2021	Powell Township

Trail Projects	Estimate	Timeframe	Funding Source
<p>Non-Motorized Trail Connections: Begin the planning phase of single track development on CR 510 while working with neighboring townships and trails organizations to collaborate resources.</p> <p>Begin construction phase of single tracks on CR 510</p>	TBD	2020-2022	Lundin, MDARD, DNR
Collaborate with Marquette County and private businesses for access to Perkins Park and Big Bay Harbor to provide additional recreational benefits for visitors and residents.	NA	2020	NA
<p>Map out bike paths along the streets of Big Bay that connect to local businesses and all parks and recreation facilities.</p> <p>Seek cost estimates for total project.</p> <p>Write grants to assist with the funding.</p> <p>Begin design and construction of phased bike paths.</p> <p>Seek funding assistance for creative wayfinding signage for new bike path users.</p> <p>Install wayfinding signage along the bike path. Continue phased bike path development.</p>	TBD	2020-2025	DNR, MDARD, Powell Township, MCACA, Local funds, Donors
Begin discussion and coordination with partners at Marquette County, NTN, and local supporters of the Hiawatha Water Trail to improve signage and communication for improved safety along the water trail.	TBD	2020	Local Funding, DNR

Appendix A



Budget

Below is the five-year budget for Powell Township Parks and Recreation from fiscal years 2020-2025.

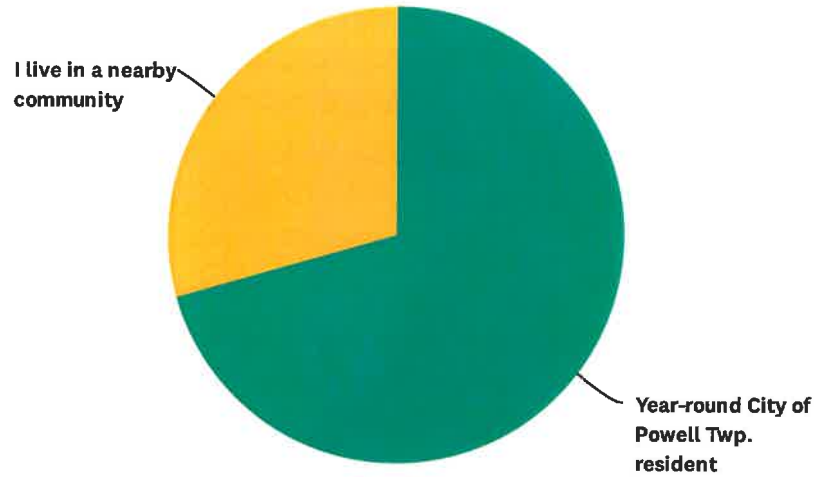
APPROPRIATIONS	2020-2021	2021-2022	2022-2023	2023-2024	2024-2025
Salary	0	0	0	0	0
Wages	7,500	7,500	8,000	8,100	9,000
Office Supplies	100	100	100	100	200
Operational Supplies	200	1,000	2,000	2,000	2,500
Professional Services	500	1,000	1,000	1,000	1,500
Electric	850	850	850	900	1,350
Water	750	900	900	900	900
Repairs and Maintenance	2,500	12,500	2,000	1,500	1,500
Equipment	1,000	1,000	1,000	1,000	700
Trail Services	0	0	0	0	2,000
Draver Park - Operating	2,000	2,000	2,000	1,200	1,200
Thomas Rock - Operating	2,000	2,000	2,000	1,000	1,200
Burns Landing - Operating	2,000	2,000	2,000	1,000	1,000
Burns Landing - Grant Project	0	0	60,000	263,000	263,000
Nature Trails Grant Expenditures	0	0	0	0	67,500
Professional Fees- Thomas Rock	0	0	0	0	0
Loan Principal - Land T Rock	15,000	15,000	0	0	0
Loan Interest - Land T Rock	2,530	1,950	0	0	0
Total Parks and Recreation	\$36,930	\$47,800	\$81,850	\$286,700	\$358,550

Appendix B

Public Input

Q1 Please select what best describes your residency.

Answered: 17 Skipped: 0



ANSWER CHOICES

Year-round City of Powell Twp. resident

Seasonal resident

I live in a nearby community

TOTAL

RESPONSES

70.59% 12

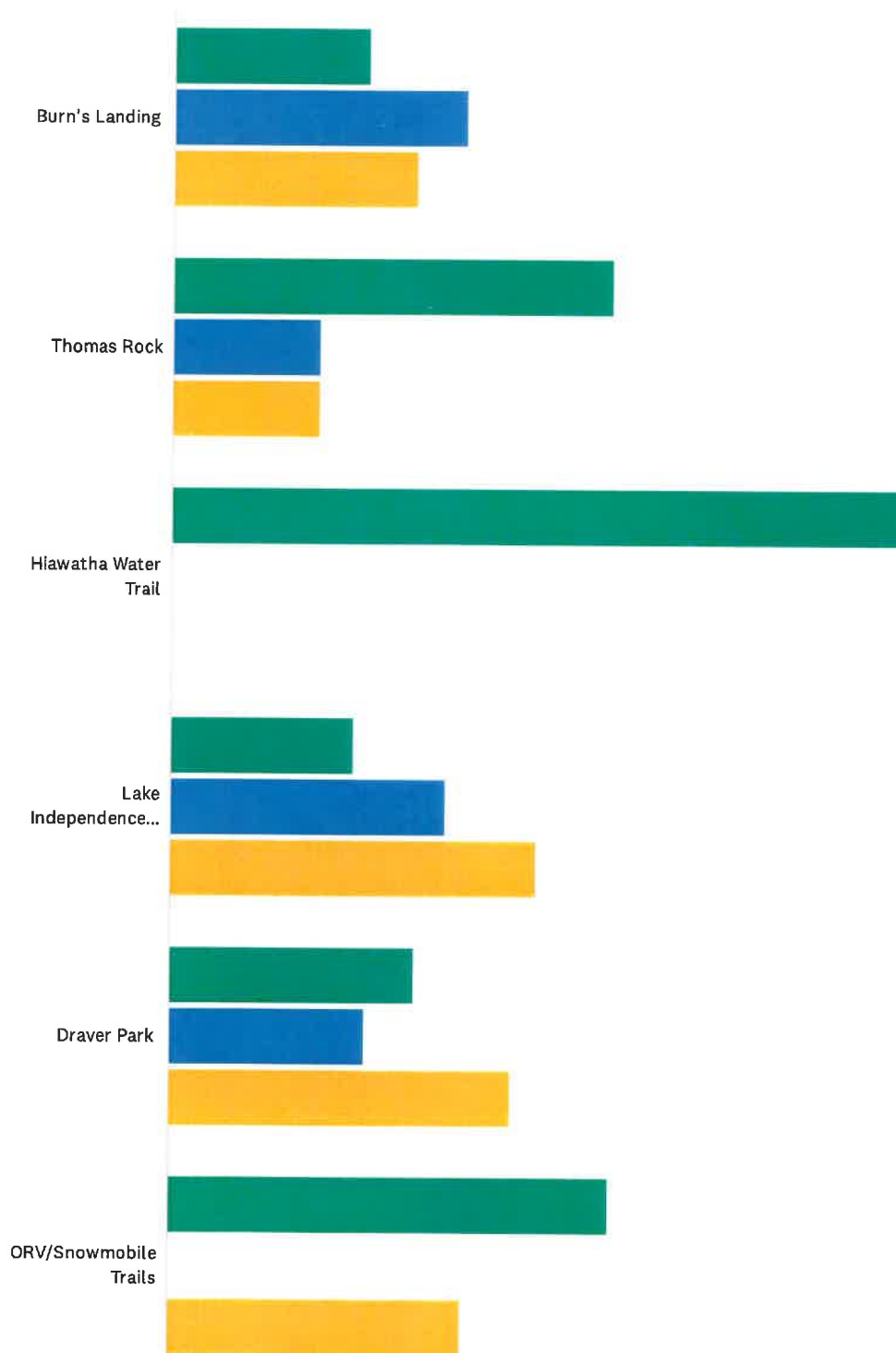
0.00% 0

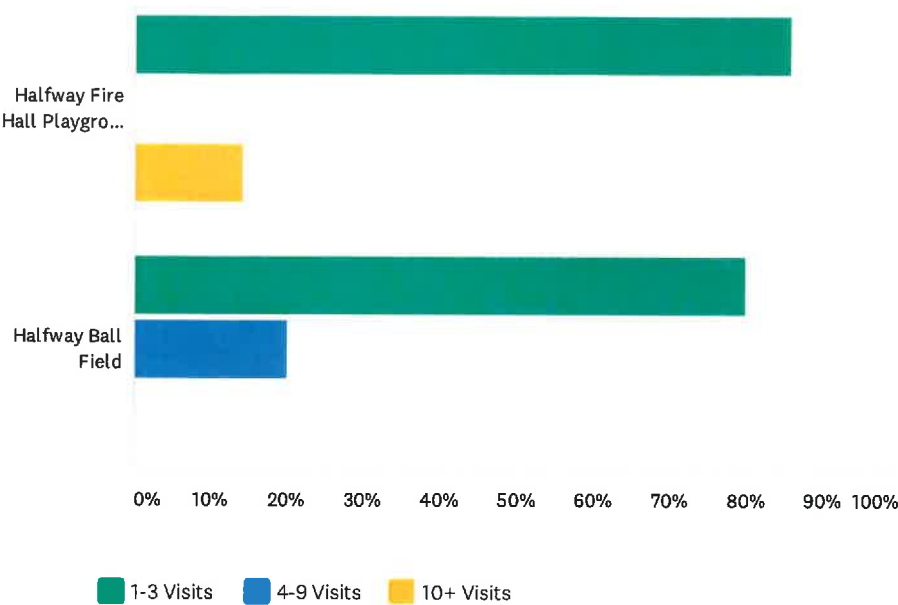
29.41% 5

17

Q2 In the last year, how often have you or a member of your household visited the recreational facilities listed below? Please check all that apply.

Answered: 17 Skipped: 0

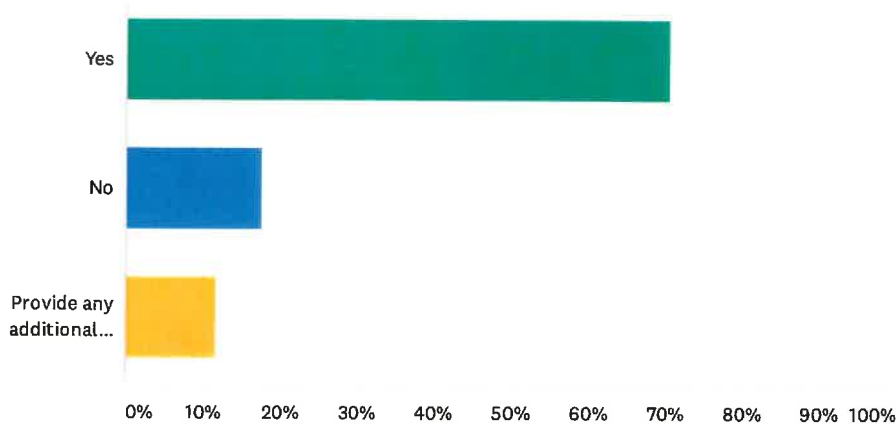




	1-3 VISITS	4-9 VISITS	10+ VISITS	TOTAL RESPONDENTS
Burn's Landing	26.67% 4	40.00% 6	33.33% 5	15
Thomas Rock	60.00% 9	20.00% 3	20.00% 3	15
Hiawatha Water Trail	100.00% 5	0.00% 0	0.00% 0	5
Lake Independence Non-motorized Trail	25.00% 2	37.50% 3	50.00% 4	8
Draver Park	33.33% 5	26.67% 4	46.67% 7	15
ORV/Snowmobile Trails	60.00% 6	0.00% 0	40.00% 4	10
Halfway Fire Hall Playground	85.71% 6	0.00% 0	14.29% 1	7
Halfway Ball Field	80.00% 4	20.00% 1	0.00% 0	5

Q3 Do the above facilities meet the recreational needs of the community?

Answered: 17 Skipped: 0



ANSWER CHOICES

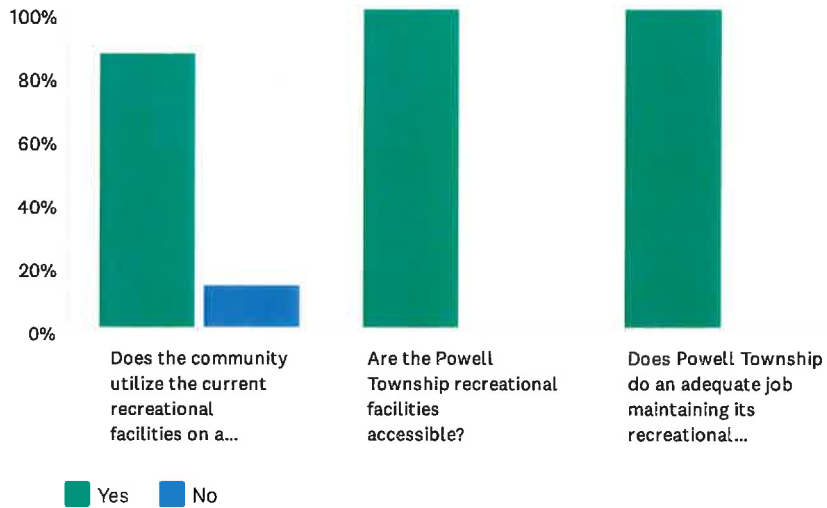
Yes
No
Provide any additional comments pertaining to your response here.
TOTAL

RESPONSES

70.59%	12
17.65%	3
11.76%	2
	17

Q4 Please answer yes or no to the following questions:

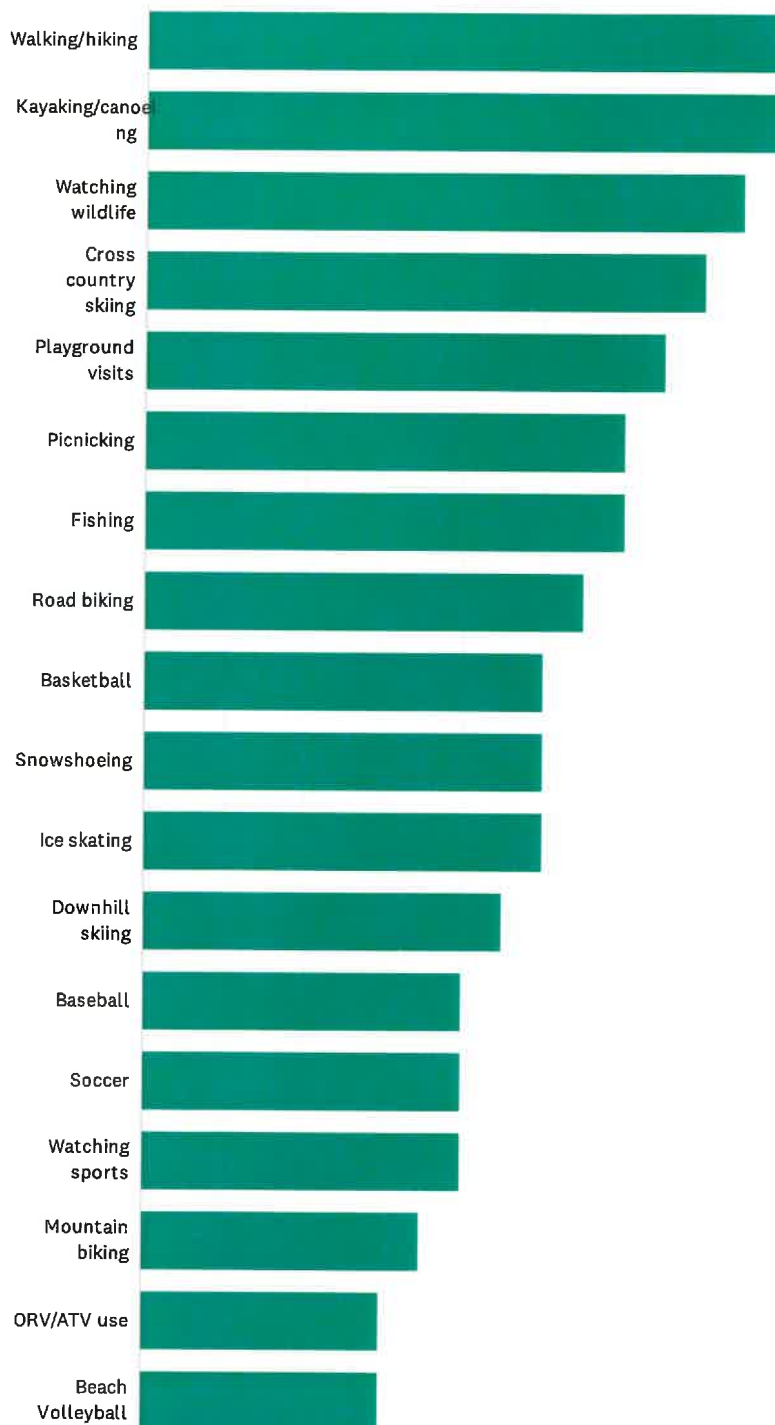
Answered: 17 Skipped: 0



	YES	NO	TOTAL	WEIGHTED AVERAGE
Does the community utilize the current recreational facilities on a regular basis?	86.67% 13	13.33% 2	15	1.13
Are the Powell Township recreational facilities accessible?	100.00% 16	0.00% 0	16	1.00
Does Powell Township do an adequate job maintaining its recreational facilities?	100.00% 17	0.00% 0	17	1.00

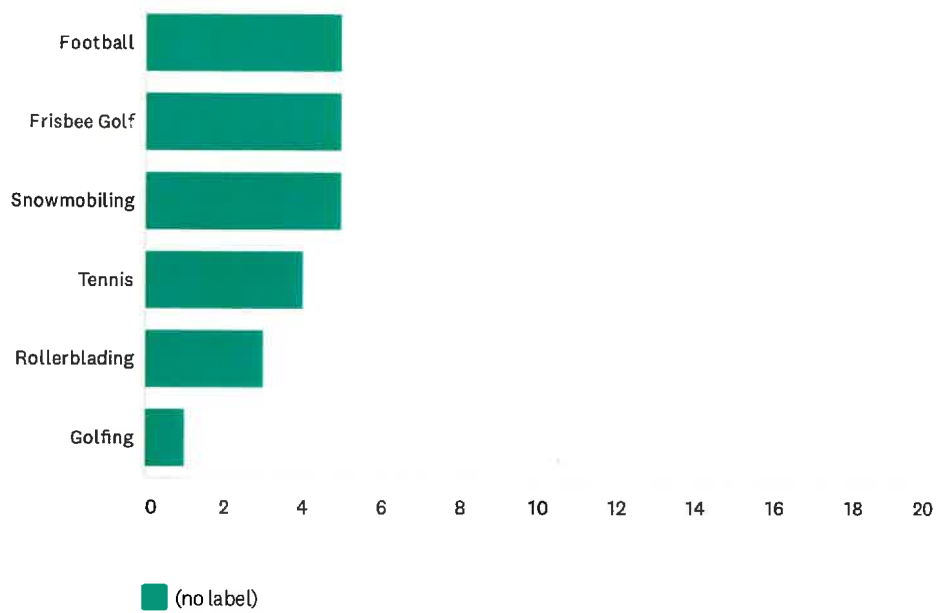
Q6 In the last year, what recreational activities have you or a member of your household participated in? Please check all that apply.

Answered: 17 Skipped: 0



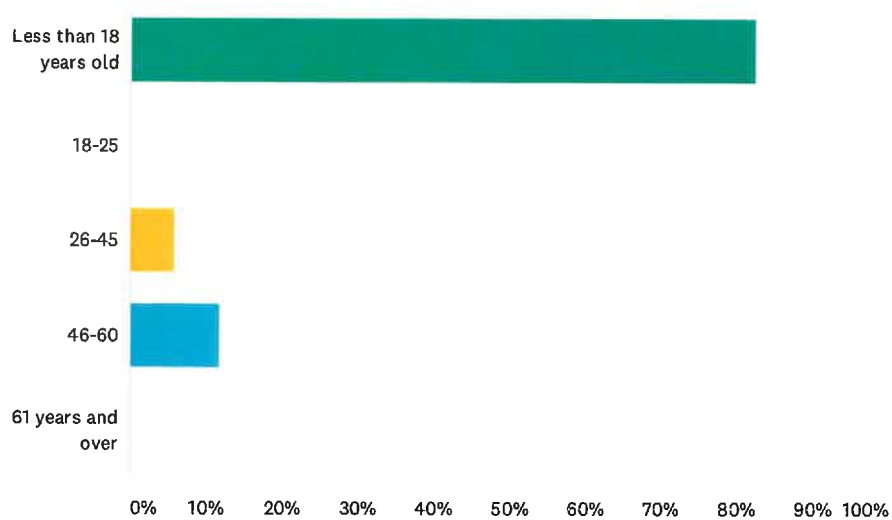
Powell Township Recreation Survey

SurveyMonkey



Q8 Are you:

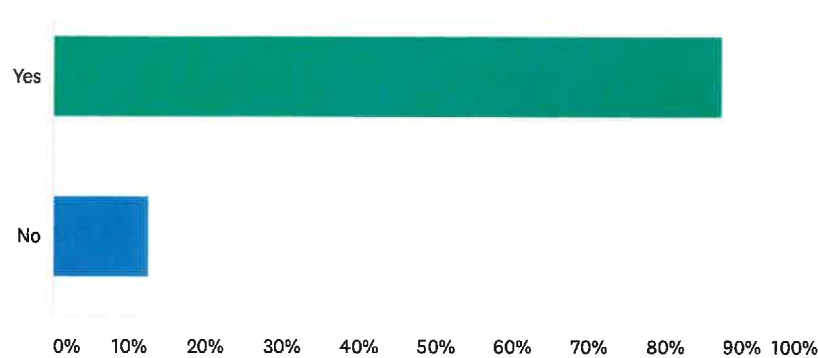
Answered: 17 Skipped: 0



ANSWER CHOICES	RESPONSES	
Less than 18 years old	82.35%	14
18-25	0.00%	0
26-45	5.88%	1
46-60	11.76%	2
61 years and over	0.00%	0
TOTAL		17

Q9 Do you go to Perkins Park ?

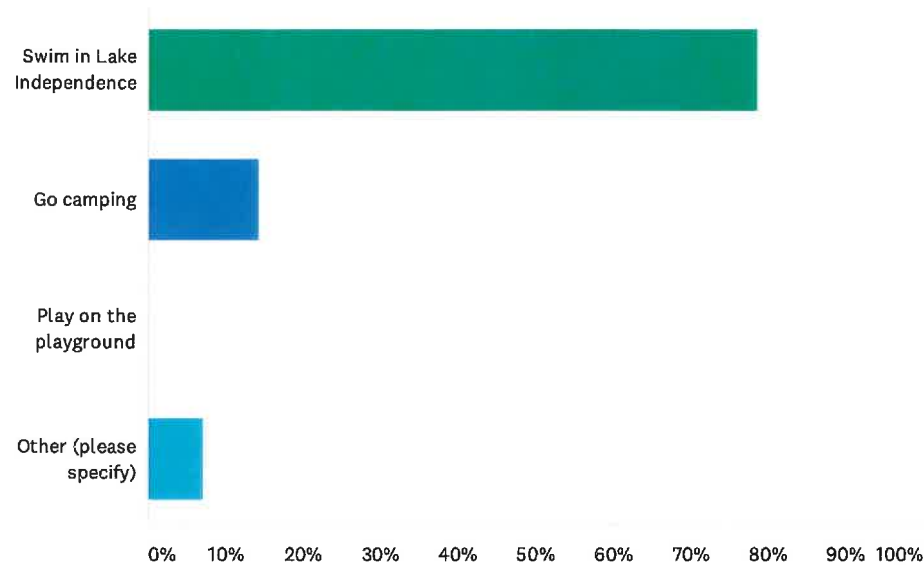
Answered: 16 Skipped: 1



ANSWER CHOICES	RESPONSES	
Yes	87.50%	14
No	12.50%	2
TOTAL		16

Q10 If you go to Perkins Park, what do you like to do while you are there?

Answered: 14 Skipped: 3



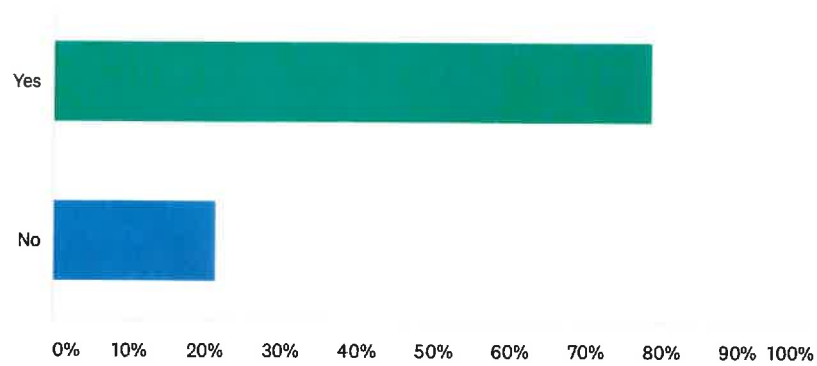
ANSWER CHOICES	RESPONSES	
Swim in Lake Independence	78.57%	11
Go camping	14.29%	2
Play on the playground	0.00%	0
Other (please specify)	7.14%	1
TOTAL		14

Q11 What changes would you like to see at Perkins Park

Answered: 7 Skipped: 10

Q12 Do you go to the Big Bay Harbor of Refuge?

Answered: 14 Skipped: 3



ANSWER CHOICES

Yes

No

TOTAL

RESPONSES

78.57%

21.43%

11

3

14

Appendix C

Meeting Minutes
Resolution
Checklist

**COMMUNITY PARK AND RECREATION PLAN****CERTIFICATION CHECKLIST**

By Authority of Parts 19, 703 and 716 of Act 451, P.A. 1994, as amended, submission of this information is required for eligibility to apply for grants

INSTRUCTIONS: Complete, obtain certification signatures and submit this checklist with a locally adopted recreation plan.

All recreation plans are required to meet the content and local approval standards listed in this checklist and as outlined in the *Guidelines for the Development of Community Park and Recreation Plans* provided by the Michigan Department of Natural Resources (DNR). Plans must be submitted to the DNR through MiRecGrants **with** a completed checklist that has been signed by an authorized official(s) of the local unit of government(s) submitting the plan. Plans may be submitted at any time of the year, but no later than February 1 of the year the local unit of government is applying for grants.

PLAN INFORMATION

Name of Plan:

Powell Township Parks and Recreation Plan 2020 - 2025

List the community names (including school districts) that are covered under the plan and have passed a resolution adopting the plan.

County

Month and year plan adopted by the community's governing body

Powell Township

Marquette

1/21/2020

PLAN CONTENT

INSTRUCTIONS: Please check each box to certify that the listed information is included in the final plan.

☒ **1. COMMUNITY DESCRIPTION**

☒ **2. ADMINISTRATIVE STRUCTURE**

☒ Roles of Commission(s) or Advisory Board(s)

☒ Department, Authority and/or Staff Description and Organizational Chart

☒ Annual and Projected Budgets for Operations, Maintenance, Capital Improvements and Recreation Programming

☒ Current Funding Sources

☒ Role of Volunteers

☒ Relationship(s) with School Districts, Other Public Agencies or Private Organizations

Recreation Authorities or Trailway Commissions Only:

☐ Description of the Relationship between the Authority or Commission and the Recreation Departments of Participating Communities

☐ Articles of Incorporation

☒ **3. RECREATION INVENTORY**

☒ Description of Methods Used to Conduct the Inventory

☒ Inventory of all Community Owned Parks and Recreation Facilities

☒ Location Maps (site development plans recommended but not required)

☒ Accessibility Assessment

☒ Status Report for all Grant-Assisted Parks and Recreation Facilities

☐ Waterways Inventory (if applicable)

☒ **4. RESOURCE INVENTORY (OPTIONAL)**

☒ **5. DESCRIPTION OF THE PLANNING PROCESS**

☒ **6. DESCRIPTION OF THE PUBLIC INPUT PROCESS**

☒ Description of the Method(s) Used to Solicit Public Input Before or During Preparation of the Plan, including a Copy of the Survey or Meeting Agenda and a Summary of the Responses Received

☒ Copy of the Notice of the Availability of the Draft Plan for Public Review and Comment

Date of the Notice 12/03/2019

Type of Notice Mining Journal Announcement

Plan Location Powell Township Hall, Big Bay

Duration of Draft Plan Public Review Period (Must be at Least 30 Days) 34 days

☒ Copy of the Notice for the Public Meeting Held after the One Month Public Review Period and Before the Plan's Adoption by the Governing Body(ies)

Date of Notice 01/11/2020

Name of Newspaper The Mining Journal

Date of Meeting 01/14/2020

☒ Copy of the Minutes from the Public Meeting

☒ **7. GOALS AND OBJECTIVES**

☒ **8. ACTION PROGRAM**

☒ **9. POST-COMPLETION SELF-CERTIFICATION REPORT(S)**

PLAN ADOPTION DOCUMENTATION

APPROVAL DOCUMENTATION: For multi-jurisdictional plans, **each** local unit of government must pass a resolution adopting the plan. Prepare and attach a separate page for each unit of government included in the plan.

☒ 1. Official resolution of adoption by the governing body dated: 01/21/2020

☒ 2. Official resolution of the Powell Township Recreation Commission or Board, recommending adoption of the plan by the governing body, dated: 01/14/2020

☒ 3. Copy of letter transmitting adopted plan to County Planning Agency dated: 01/23/2020

☒ 4. Copy of letter transmitting adopted plan to Regional Planning Agency dated: 01/23/2020

OVERALL CERTIFICATION

NOTE: For multi-jurisdictional plans, Overall Certification must include the signature of each local unit of government. Prepare and attach a separate signature page for each unit of government included in the plan.

I hereby certify that the recreation plan for

Powell Township Parks n Rec
(Local Unit of Government)

includes the required content, as indicated

above and as set forth by the DNR.

Harlene Turner
Authorized Official for the Local Unit of Government

1-23-2020
Date

This completed checklist must be uploaded in MiRecGrants.

Powell Township Recreation Committee Resolution of Approval of the Powell Township Parks and Recreation Plan 2020 – 2025

WHEREAS, the Powell Township Recreation Committee is made up of representatives from Powell Township, and

WHEREAS, the Powell Township Recreation Committee began the process of developing the Powell Township Parks and Recreation Plan in accordance with the most recent guidelines developed by the Department of Natural Resources and made available to the community, and

WHEREAS, the public was given a well-advertised opportunity during the development of the draft plan to express opinions, ask questions, and discuss all aspects of the recreation and natural resource conservation plan, and

WHEREAS, the public was given a well-advertised opportunity and reasonable accommodations to review the final draft plan for a period of at least 30-days, and

WHEREAS, a public hearing was held on January 14, 2020 at the Powell Township Hall to provide an opportunity for all residents of the planning area to express opinions, ask questions, and discuss all aspects of the Powell Township Parks and Recreation Plan 2020 – 2025, and


WHEREAS, the Powell Township Recreation Committee has developed the plan as a guideline for improving recreation and enhancing natural resource conservation for Powell Township, and

WHEREAS, after the public hearing, Powell Township Recreation Committee voted to approve the Powell Township Parks and Recreation Plan 2020 – 2025, and

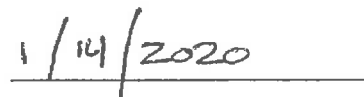
NOW, THEREFORE BE IT RESOLVED the Powell Township Recreation Committee hereby approves the Powell Township Parks and Recreation Plan 2020 – 2025 and recommend the plans final adoption by the Powell Township Board of Trustees.

Yeas: 5 Nays: 0 Absent: 0

Heidi Shatz - Abstain



Chair



Date

Powell Township Board of Trustees Resolution of Adoption of the Powell Township Parks and Recreation Plan 2020 – 2025

WHEREAS, the Powell Township Board of Trustees is made up of representatives from Powell Township, and

WHEREAS, the Powell Township Board of Trustees approved the funds for the Powell Township Recreation Committee to begin the process of developing the Powell Township Parks and Recreation Plan in accordance with the most recent guidelines developed by the Department of Natural Resources and made available to the community, and

WHEREAS, the public was given a well-advertised opportunity during the development of the draft plan to express opinions, ask questions, and discuss all aspects of the recreation and natural resource conservation plan, and

WHEREAS, the public was given a well-advertised opportunity and reasonable accommodations to review the final draft plan for a period of at least 30-days, and

WHEREAS, a public hearing was held on January 14, 2020 at the Powell Township Hall to provide an opportunity for all residents of the planning area to express opinions, ask questions, and discuss all aspects of the Powell Township Parks and Recreation Plan 2020 – 2025, and

WHEREAS, after the public hearing, Powell Township Recreation Committee voted to approve the Powell Township Parks and Recreation Plan 2020 – 2025 and recommends the plans final adoption by the Powell Township Board of Trustees.

NOW, THEREFORE BE IT RESOLVED the Powell Township Board of Trustees hereby approves the Powell Township Parks and Recreation Plan 2020 – 2025.

Yeas:

Nays:

Absent:


Clerk

1/21/2020
Date

**Powell Township Board
Regular Meeting
PO Box 319, 101 Bensinger, Big Bay 49808
Tuesday January 21st, 2020 7:00 PM
Draft Minutes**

- 1) Call to order at 7:00 PM, by Supervisor, at Powell Township.
- 2) Pledge of allegiance.
- 3) Roll Call: Joseph Stanley (Trustee), Denise Hudson (Trustee), Arline Erickson (Treasurer), Darlene Turner (Supervisor), Samantha Morin (Clerk).
- 4) Agenda: Motion to approve the December 17th, 2019, agenda with following additions. (Stanley, Morin) All yes, motion carried.
 - New Business- 17. Cummings Five Year Maintenance Contract.
- 5) Approval of Minutes:
 - Motion to approve the December 17th, 2019 Township Board Meeting minutes (Erickson, Turner). All yes, motion carried.
- 6) Revenue & Expenditure Report: Motion to approve Revenue and Expenditure Report (Hudson/Stanley). All yes, motion carried.
- 7) Treasurer's Report.
- 8) Approval of Bills: Motion to approve Bills to be paid (Stanley/Erickson). *Discussion as follows* All yes, motion carried.
 - a) Stanley asked what the following checks were for. 9465- Passport Grant for Burns Landing. 9466- Trust Fund Grant for Burns Landing. 9480/9481- Equipment donated funds by Eagle Mine for Big Bay Pathway. 9487/9488- ATT paid twice due to billing cycle dates and Board Meeting dates. 9494 Combined Ferrell Gas invoice for all location tanks. 9504- Tree Lighting Event was accidentally put on the description line.

Committee and Department Reports

- a) Ambulance Department: No Report.
- b) Fire Department:
 - No runs. Traffic Control duties were performed at Thomas Rock on Saturday January 18th, 2020 for the Lantern Snowshoe event.
- c) Emergency Management: No Report.
- d) Parks & Recreation:
 - The Lantern Snowshoe event turned out great about 75 people attended.
 - The Five Year Recreation Plan resolution was passed and an open hearing was held.
 - The Big Bay Pathway head has been moved to the tennis courts due to logging traffic.
- e) Water Department: All good.
- f) Sewer Department: All good.
- g) Zoning Department:
 - Section 6- Community Services was submitted to the Planning Commission by Jason McCarthy.
 - The Planning Commission is looking for a new member.
 - The Planning Commission requests a 10% increase to their printing budget for printing the Master Plan and maps.

- Motion to accept amendment to Rules and Regulations. (Stanley/Hudson) Roll Call Vote: Erickson- no, Stanley-yes, Hudson-yes, Turner-yes, Morin-yes. Discussion as follows. Motion carried.
 - Erickson stated that members should have to have five years of experience before being eligible for Fire Chief not two years.
 - Turner stated the Fire Chief gave the Fire Departments recommendations for the amendment to Turner and Morin in a meeting.

3) Fire Department Chief

- Motion to nominate Chris Sutter as Fire Chief (Hudson/Morin) *Discussion as follows*. Roll Call Vote requested by Board Member: Erickson-no, Stanley-no, Turner-yes, Morin-yes, Hudson-yes. Motion carried.
 - Turner stated once the rules and regulations are complete the board will decide on a Fire Chief.
 - Turner stated Chris Sutter will not effectively take over for 15 days.

New Business

1.) Fire Department: No Requests.

2.) EMS:

- a. Motion to pay \$20.00 for glucometer control solution (Stanley/Erickson) All yes. Motion carried.
- b. Motion to pay \$4,500.00 for a Lifepak 12 defibrillator (Erickson/Stamley). *Discussion as follows*. All yes. Motion carried.
 - i. Turner stated the money will come out of the EMS equipment fund and the EMS vehicle repair fund.

3.) Planning Commission: No Requests.

4.) Parks & Rec:

- a. Motion to approve Five Year Recreation Plan resolution (Erickson/Stamley) Roll Call Vote: Morin-yes, Turner-yes, Erickson-yes, Stanley-yes, Hudson-yes. Motion carried.

5.) 2020 Paving Projects CR KE (CR 550 Southerly to CR KB) \$115,538.00 Estimate (Erickson/Stamley). *Discussion as follows*. All yes. Motion carried.

- a. Stanley requested to table the 2020 and 2021 paving projects until further research is done regarding Lighthouse Road (Stanley/Hudson). Three yes, Two no. Motion carried.

6.) Marquette County Road Commission- Abandoning of parts of CR KCG. Public Hearing Monday, February 17th, 2020 6:15pm MCRC office Ishpeming.

7.)

- a. Resolution for elected Officials Salary- Budget year 2020-2021 Supervisor \$10,000. (Erickson, Stanley) All yes. Motion carried.
- b. Resolution for elected Officials Salary- Budget year 2020-2021 Clerk \$12,000 (increase \$2,000). (Stanley, Turner) *Discussion as follows*. Four yes, one no. Motion carried.
 - i. Hudson asked what the raise is based on. Morin stated work time increase.
- c. Resolution for elected Officials Salary- Budget year 2020-2021 Treasurer \$10,000. (Turner, Stanley). All yes. Motion carried.

- d. Resolution for elected Officials Salary- Budget year 2020-2021 Trustee \$65.00 (Increase \$5.00) (Stanley/ Hudson) Discussion as follows. Four yes, one no. Motion carried.
- i. Erickson asked what the extra \$5.00 was for. Hudson stated both Stanley and Hudson have served two terms with no raise.
- 8.) Resolution for Poverty Exemption 2019-2020 (Hudson/Morin) Roll Call Vote: Tuner-yes, Stanley-yes, Hudson-yes, Morin-yes, Erickson-yes. Motion carried.
- 9.) Resolution for Treasurer to Invest Funds (Hudson/Morin) Roll Call Vote: Turner-yes, Stanley-yes, Hudson-yes, Morin-yes, Erickson-yes. Motion carried.
- 10.) Resolution to waive penalty for Property Transfer (Erickson/Stamley) Roll Call Vote: Erickson-yes, Hudson-yes, Stanley-yes, Morin-yes, Turner-yes. Motion carried.
- 11.) Motion to approve Clerk's Department Budget: Amend \$300.00 from travel to transfer \$300.00 to deputy wages. (Erickson/Stamley). Motion carried.
- 12.) Motion to approve the WIMAX agreement (Hudson/Turner). *Discussion as follows.* All yes. Motion carried.
- a. Turner stated this is a ten year agreement that will charge \$40 per month to NMU with a 2% increase per year.
- b. Turner stated that NMU having the Water Tower key for 24 hours and then returning it to Powell Township is okay.
- 13.) Motion to approve April conference for three people to attend at \$1,500 each in Traverse City. (Erickson/Morin) *Discussion as follows.* All yes. Motion carried.
- a. Stanley asked who is going. Turner stated Erickson, Turner, and Fraley.
- b. Hudson asked the date. Turner stated the last weekend in April. Hudson stated she would like to go but is busy during that time.
- 14.) Motion to approve moving \$1,000 from deputy treasurer's wage to treasurer's travel. (Erickson/Morin) All yes. Motion carried.
- 15.) Motion to approve moving \$700.00 from deputy supervisors wage to supervisors training. (Erickson/Stamley). All yes. Motion carried.
- 16.) Motion to approve a five year Cummings Maintenance contract for \$5463.23. (Hudson/Turner) *Discussion as follows.* All yes. Motion carried.
- a. Erickson stated the Board should ask Wilcox and TenEyck. Both agreed the contract was good.

Public Comment

- Edgar: How do we get considered for pavement at Lighthouse road? How many people live on CR KE and CR KCG. How does their tax base relate to ours? What is the next step after doing the petition? We have asked for this road to be paved for twenty years.
- Ford- It is an injustice to the residents of Lighthouse Road that it is not being paved. The County Road Commission makes recommendations for the community by the County Road Commission does not live in the community.
- Cain- Thank you for voting in a new Fire Chief.
- Korstad- Can we figure out the cost of grating Light House Road? Is the grating job security for the County Road Commission?
- December- Lighthouse Road needs to be paved. If your looking to only do sections of road, you could also pave the quarter mile in front of my property on Squaw Beach. It is important to help the Fire Department and EMS monetarily.

- Edgar- Would it help if we talk to the County Road Commission?
- Gertz- Can the treasurer get the tax information for us showing how many people live on CR KE and CR KCG and the difference in tax base between them and Lighthouse Road.
- December- Who was at the County Road Commission Meeting? Stanley stated the Board of Directors, two managers, Jim, five members, secretary, and a recording secretary.
- December- Who was there to represent Powell Township? Turner stated that's why Stanley was there.

Next regular meeting: Tuesday February 18th, 2020 at the Township Hall 7:00pm
Meeting adjourned at 8:15 pm by Supervisor.

Minutes prepared by
 Leah Fraley
 Powell Township Deputy Clerk

Amounts approved to be paid outside of Bills to be paid

- \$750 to Oberstar for well work.
- \$20 for EMS Glucometer control solution.
- \$4,500 for Lifepak 12 defibrillator.
- \$4,500 for April Conference.
- \$5,463.23 Cummings 5 Year Contract.

**Powell Township Parks & Recreation
Public Hearing
PO Box 319, 101 Bensinger, Big Bay 49808
Tuesday January 14th, 2020 7:08 PM
Draft Minutes**

Public Hearing Opened:

A public hearing for the Powell Township Parks and Recreation five year plan was called to order by Chair- Gonstead at 7:08p.

- The five year plan was published in the paper and the public was given a well- advertised opportunity and reasonable accommodations to review the final draft plan for a period of at least 30-days.
- Leah Fraley read the Powell Township Recreation Committee Resolution of Approval of the Powell Township parks and Recreation Plan 2020-2025 aloud.

Public Comment:

- M. Gonstead asked if there is a way to asses usage of the halfway park.
- M. Gonstead asked by the halfway ballfield was not maintained before.
- M. Gonstead asked if this is the final five year plan or a draft.
- Adam stated he did not realize that a ball field in the halfway was an option.

Public Hearing Closed:

A public hearing for the Powell Township Parks and Recreation five year plan was closed by Chair- Gonstead at 7:16 pm.

Notes prepared by Leah Fraley

Sports

Bowling from 18

we could afford the replacement and when we could."

She demurred on a price while indicating some where in the neighborhood of six figures.

"We've tried some epoxy on the lanes where pieces (of the approach) shift up and down. We finally found out we could drop a 16-pound (bowling) ball to read just them."

Unlike River Rock, which had lanes and approaches made of wood, Superior Lanes' lanes were made of a synthetic material when the center opened as Westwood Lanes in the early 1980s.

The new Quaker/AMF lanes are also made of a synthetic material, actually an overlay for the entire length of the lanes and approaches — the area where bowlers walk to deliver a bowling ball.

At both centers, the beginning part of lane nearest the foul line, commonly known as the "heads," were the only parts fully replaced. That area takes the heaviest pounding when the bowling balls weighing six to 16 pounds are regularly dropped or thrown onto that area to get the ball rolling.

Once replaced, reportedly the first 20 feet in Ishpeming and first 12 feet in Marquette, a half-inch to three-quarters-of-an-inch overlay was placed atop it. The put decks, where the pins sit and get cleaned by all their bouncing around, were also replaced at each place.

A major difference in the replacement work is that while River Rock kept its original wooden approaches, Superior replaced their synthetic ones.

A truck with the lane material stopped on Marquette on Nov. 12 with work commencing that evening, according to installation crew leader Rick Mueller of the Chicago area.

He was joined by his brother Bill Mueller, also from around Chicago, Adam Hillers of Nebraska and Frank Assmus of Wisconsin.

They worked on six lanes at a time for nearly two weeks, with work wrapping up the weekend before Thanksgiving.

"For most people, they probably won't even notice a difference," Manning said about casual "open" bowlers. "Those are about 80 to 85 percent of our business, open play."

"Our league bowlers will definitely notice as they're in here every week during the fall, winter and spring."

She also hopes that the material taken out of her center won't just go straight to a landfill.

"We'd absolutely love to see people 'repurpose' these lanes," Manning said. "People can contact us about it. Remember, these aren't real wood, so I don't know about the potential for, say, flooring."

"We'd just ask people to provide us with photos of their finished products."

For those interested, call the center at 225-9320 or email to superiorcentermanning@gmail.com.

Steve Brownlee can be reached at 906-228-2500, ext. 252. His email address is sbrownlee@miningjournal.net.

Giannis dominates in just 22 minutes as Bucks rolls Knicks

By CHARLES F. GARDNER

Associated Press

MILWAUKEE — Bucks coach David Fizdale knew his struggling team faced a huge challenge Monday night against the streaking Milwaukee Bucks.

New York stumbled at the start and never had a chance as Giannis Antetokounmpo and the Bucks won their 12th straight game in a 132-88 romp.

Antetokounmpo needed only 14 minutes on the court to record another double-double, finishing with 29 points and 15 rebounds. The Bucks won by 44 points after beating Charlotte by 41 on Saturday, the first time in franchise history Milwaukee posted back-to-back winning margins of 40 points or more. It was the fifth time it's

been done in NBA history.

"I don't feel we came in here with the idea we could beat this team," Fizdale said.

The Bucks (18-3) led by as many as 47 and cruised behind Antetokounmpo, who pulled down his 10th rebound with 4:43 left in the second quarter for his league-leading 20th double-double.

The reigning MVP shot 10 of 14 from the field, including 3 for 4 from 3-point range, while playing 22 minutes.

He exited with nearly five minutes left in the third quarter and the Bucks ahead 93-54.

"I watch and listen to him lead his guys," Fizdale said. "He's just impressive. The league is in good hands. I know that, when you've got a guy like that at the top."



The Bucks' George Hill, right, drives against the New York Knicks' Kaden Allen during the second half Monday in Milwaukee. (AP photo)

Brewers part ways with 5 players, making them free agents

MILWAUKEE (AP) —

The Milwaukee Brewers declined to offer contracts to infielder Travis Shaw, right-hander Jimmy Nelson and three others Monday, making them free agents.

Pitchers Alex Claudio and Junior Guerra and infielder Tyler Saladino were also let

go as the club has parted with a number of key players.

After catcher Yasmani Grandal left for a \$73 million, four-year contract with the Chicago White Sox last month, infielder Mike Moustakas agreed to a \$65 million, four-year deal with Cincinnati on Monday, a person fa-

miliar with the negotiations told The Associated Press.

Shaw hit 63 homers over the 2017 and '18 seasons, but the corner infielder slumped last year. Nelson struggled after missing nearly two years following surgery on his right shoulder.

The Brewers and Ben

Gamel agreed to a \$1.4 million, one-year deal to avoid arbitration. Shortstop Orlando Arcia also agreed to a \$2.2 million, one-year deal to avoid arbitration.

Milwaukee projects to save around \$1.5 million in salary in 2020 by cutting the five players.

Spartans from 18

fun in the sun or in the gym last week during the Miami Invitational.

Winston, trying to play through his grief, was unable to stop Virginia Tech from leading Michigan State to the title.

The senior point guard and his teammates, many of whom were friends with his late brother, did bounce back

with wins over Georgia Tech and UCLA to finish fifth.

The Big Ten regular player of the year is averaging nearly 18 points, making 43% of his shots overall and 36% beyond the arc, and six assists while not missing a game.

"Cassius has been incredible when you think about what he's went through," said Izzo, adding Winston had his best practice in weeks on Sunday.

Winston had 20 points, 10 assists, four steals and only one turnover when Michigan State best Duke in last season's NCAA Tournament to advance to an eighth Final Four under Izzo.

The Spartans are missing a few players — Matt McKay, Kenny Gons and Nick Ward — who helped them win that game.

The Blue Devils look different, too, less than a week removed from a stunning loss

at home to Stephen F. Austin.

While last season's top-heavy group was dominated by Zion Williamson and RJ Barrett, coach Mike Krzyzewski has said the current team has its talent more evenly spread through the top nine or 10 players on the roster.

That has led to the work-in-progress team lacking a go-to scorer and struggling enough offensively to average nearly 16 turnovers a game.

Boys from 38

"For us, defense is going to be key," he said.

"I'm a big defense fan, so we're going to implement multiple defenses to try and keep offenses off-balance."

"Against teams like Iron Mountain, you want to keep those kids off-balance, and you want to keep them off their game early on in the game."

"We're going to have a style of offense where we attack the basket. We can shoot, so we're going to attack the basket to try to score some layups and also be able to lock out and shoot 3s."

"With those two things, I think we're going to see a couple more wins in the win column this year."

The Emeralds return a few key players, including Schyler Andersen, who averaged 12.5 points per game last season.

"Schyler Andersen is a great athlete who can shoot the ball," Kangas said. "He's also a big kid at 6-foot-2 that can post, so he'll pose some matchup problems. I think he'll be one of our go-to guys."

Other key returners include Mark Block and Joey Hobolt.

"Mark Block played last year and played very well," Kangas said. "Joey Hobolt is another kid who can shoot the lights out when he gets hot."

Kangas is also hopeful about freshman Bryce Blasi.

"I think he fits in real well with this group of guys," Kangas said. "He's taller and athletic, and he can shoot and make things happen. I think those four are going to do some great things for us."

The roster is rounded out by Sammy Warren, Rusty Schneider, Jordan St. John, Jerry Jack and Nathan Dechow.

"(Our role players) coming off the bench and finding ways to help out is going to be a big factor," Kangas said.

The Emeralds, who open their season next

Tuesday night at Newberry, will have plenty of big games early in the season.

"We start off with who I would consider a rival in Newberry. We start off with Newberry right off the bat, so it gets us going right away," Kangas said.

"Then we'll be up against Iron Mountain in our third game, so going from a rivalry game to a team who made the (state) finals last year will really show us where we're at and where we need to be to cause district trouble."

Kangas also made sure to set a goal for the team to work toward during the season.

"We would love to have a district championship, but I think every-one starts out at the beginning of the year hoping to win districts. It's been quite while since we've won one here, so that's always a goal," he said. "But our regular season goal is 10-10. If we can end the season with seven more (wins) than last year, it would be a great season for these guys, and we just want to be the best team we can be by district time."

Girls from 38

"Kayla Muth is a nice all-around player. She can do some things outside and inside for us. Emma Strassman really came on in the latter part of last year. She's a quick little guard that can get to the basket, and I think she led us in scoring in a couple games last season."

Winkel feels additional will complement the existing roster.

"We've got four new players this year," he said. "Ava Fleck, who will probably be our backup point guard; we'll look to her to carry some of the ball-handling abilities."

"We have a senior who didn't play last year. Sarah Burkert, she's just a little bundle of energy. She's a little firecracker that we can bring in to give us a shot in the arm. I think she can really give the team a bit of energy when we're kind of in a rut."

"Olivia Kungren is another good energy player. She's got some height and size, and she's a really good athlete. She plays incredibly hard, so she's hopefully going to break some havoc for us."

"Brooke St. John is another good all-around player we're adding."

Rounding out the roster are Madison Zellar, Brooke Richey and Raya Twardowski.

"(Madison) is our starting point guard," Winkel said. "She does a good job controlling the game, and is a real heads-up player. (Brooke) came on as a rebounder last year, and she's one of our better outside shooters. (Raya) is one of our better shooters and defenders on the inside."

The Emeralds' focus in practice has mostly been on defense.

"We've struggled on the offensive side," Winkel said. "I think the keys for us are going to be on the defensive end."

If we're not going to be a high-scoring team, then we can't let the other team score.

"We're really focusing on

Manistique girls

2019-20 schedule
All times Eastern
Home games in bold

Dec. 3 — at Negaunee, 7:15 p.m.

Dec. 5 — at Marquette, 7:30 p.m.

Dec. 9 — Newberry, 7:30 p.m.

Dec. 11 — at Rudyard, 7:30 p.m.

Dec. 17 — Engadine, 7:30 p.m.

Dec. 19 — at Westwood, 7:30 p.m.

Jan. 3 — Gwinn, 7:30 p.m.

Jan. 7 — at Bark Rvr. Harris, 7:30 p.m.

Jan. 10 — Negaunee, 7:30 p.m.

Jan. 13 — at Engadine, 7:30 p.m.

Jan. 17 — at Gladstone, 7:30 p.m.

Jan. 21 — at Marquette, 7:30 p.m.

Jan. 24 — Ishpeming, 7:30 p.m.

Jan. 30 — Gladstone, 7:30 p.m.

Feb. 3 — at Gwinn, 7:15 p.m.

Feb. 6 — Iron Mountain, 7:30 p.m.

Feb. 11 — Rapid River, 7:30 p.m.

Feb. 14 — Westwood, 7:30 p.m.

Feb. 17 — at Iron Mountain, 7:30 p.m.

Feb. 25 — at Ishpeming, 7:15 p.m.

playing super hard on the defensive side. (We're also working on scoring in transition. If we can get some stops and push that ball up

the court, we can get some easy baskets before the defense is set."

Winkel's Emeralds will focus on each game as it comes with the hope of a postseason run.

"The schedule's always tough," he said. "We're in a really good (Mid-Peninsula) conference — it's deep. Every night out is a battle. There's no nights off."

"You just want to build as the year goes on. You want to be playing your best by the end of the year. Every year is different, so you take that regular season and figure out your identity. I hope that we can do that during the season, so come the last five games, we know who we are and what we need to do."

"In the postseason, anything can happen. You do what you got to do to win battles and move on to the next one."

FROPPINESS:

That joyous feeling that rushes through your body when you have a bite of a wendy's frosty.



Quality in every bite
(approved for all ages)



Wendy's

2025 US41 W.,
Marquette
228-3663

IRON-BAY
RESTAURANT • DRUGERY • TAP ROOM
MARQUETTE, MI

DELICIOUS Whitefish Tacos
Tater Tots & Chowder
Downtown Marquette

POWELL TOWNSHIP PARKS AND RECREATION PLAN OPEN HOUSE

Powell Township invites you to attend the Powell Township Parks and Recreation Plan 2020 - 2025 Open House on December 11, 2019 at 8:00 PM at the Powell Township Hall, 301 Burlington St., Big Bay, MI 49906. Powell Township is updating their 5-year Parks and Recreation Plan and they are seeking input from the public on the draft plan's vision, goals, objectives, strategies and action plan that will guide Powell Township recreation planning over the next five years. The Open House will begin with a presentation on key plan elements, followed by a series of activities to give public input.

On December 12, 2019, the Draft Powell Township Parks and Recreation Plan will be available for an additional public review and comment period for up to 30 days. A copy of the draft plan can be reviewed at the Powell Township Hall or be made available online on the Powell Township website (<https://powelltownship.org>) and on the LUPIND website at <https://www.lupind.org>. After the 30-day public review and comment period, the Powell Township Board will conduct a public hearing for additional comments and consider final adoption. For more information, contact CUPIND at (906) 796-9234 or email info@cupind.org.

Records

Obituaries

Evelyn Alice Keller

MARQUETTE, MI - Evelyn Alice Keller, age 99, of Marquette, entered eternal life Thursday morning, January 9, 2020, at the North Nursing Center, in the loving, comforting care of her family.

Born September 4, 1920, in Detroit, a daughter of Reuben and Myrtle (Seibert) Orr. Evelyn was raised in Detroit and graduated from Fordson High School in Dearborn. Following graduation, she went to work at Montgomery Ward in their accounting department. On June 14, 1941, Evelyn Alice Orr married Robert H. Keller, Sr., in Detroit. Soon after, Bob was shipped out to serve in the US Navy during World War II. Upon his honorable discharge, the couple continued to reside in the Detroit area where Evelyn enjoyed her role as a homemaker and raising their four children. The family enjoyed spending summers on Lake Skopje in Grand Traverse County and the couple retired there in 1979. In 1996, they relocated to Marquette to join their children and grandchildren. Evelyn was a member of Redeemer Lutheran Church. Evelyn is survived by three sons, Robert H. (Merilee) Keller Jr. of Marquette, Thomas L. Keller and Debbie Tillinger of



EVELYN KELLER

Marmot Island, FL, and Dan (Barb) M. Keller of Marquette, and her daughter, Diane R. Keller (Gabrielle) Keller. She is survived by her grandchildren, Andy Sc. Kadline Sules (Kathy) Kellars, Jessica (Brian) Sandstrom and Danielle (Nick) Slattery, Scott (Michelle) Tillinger, Austin, Abby and Jake Roemer; ten great-grandchildren; and her granddogs, Tragger, Romanina, and Lucian.

She was preceded in death by her parents; her husband, Bob; and her sister, Doris; and Air buddy, Lord Gustavian and many other cats and dogs.

Friends may call at Fastbender Swanson Hansen Funeral and Cremation Services on Tuesday, January 14, beginning at 5 p.m. until the time of service at 6 p.m. Pastor Chad Baker will officiate. A reception will follow in the reception room located at the funeral home.

In lieu of flowers, memorials may be directed to UPAWS (Upper Peninsula Animal Welfare Shelter), P.O. Box 968, Marquette, MI 49855.

Condolences may be expressed online at fastbender-swanson.com.

Leila Phyllis (Herrala) LaPin

WATERLOO, WI - Leila Phyllis (Herrala) LaPin, 88, of Watertown, Wisconsin, went to live with Jesus in the early morning hours of Thursday, January 9, 2020, peacefully in her sleep at Marquette Manor where she had been residing.

Leila was born July 14, 1931, in Ishpeming, Michigan, to Tom and Elsie (Anna) Herrala of Palmer, Michigan. Leila graduated from Negaunee High School and then married the love of her life, Francis Keri LaPin, of Michigan, in 1949. Since Francis had enlisted in the US Air Force, they made their home all over the world including Okinawa and at least nine states. Francis retired after 28 years at Keesler AFB in the UP, so they made their home in first Harvey and then Marquette for several years.

Leila enjoyed going with Francis down to the Rio Grande Valley in Texas during the winter to relax and visit with their many friends. Francis would pass away in Harlingen, Texas, in 1997 after 48 years of marriage, so Leila began to live in Texas with her oldest daughter. In the last three years, she has lived in Watertown, Wisconsin, near her son.

Leila was an active member of the Roman Catholic Church in each of the many places that she lived, most recently belonging to St. Henry Catholic Church of Watertown, Wisconsin. A devoted mother and homemaker, Leila had many skills including



LEILA LAPIN

sewing and crocheting. Surviving are her four daughters and one son: Chrystal (Larry) Holley of Station, Texas; Vicki (Brian) Rose of Anchorage, Alaska; Gayle (Larry) Grandis of Joshua Tree, California; Yvette (Dale) Hobbs, of Austin, Texas; and Val (Suzi) LaPin of Watertown, Wisconsin; 7 grandchildren: Daniel (Linda) Franklin, Beth (Jimmy) Franklin, Megan Rose, Amber Rose, Joshua LaPin, and Adam (Amanda) LaPin; and 14 great-grandchildren.

She is also survived by her daughter, Wanda (Susan) Herrala of Citrus Springs, Florida; her sister-in-law, Phyllis (Howard) Leggett of Horton, Michigan; and several nieces, nephews, and cousins.

She was preceded in death by her husband Francis and her parents Tom and Elsie Herrala.

A Mass of Christian Burial will be celebrated at 1 p.m. on Saturday, January 11, at St. Louis the King Catholic Church in Harvey with Rev. Fr. Glenn Theoret officiating and family friend Deacon Vince (Chris) Beckley assisting. Burial will be in the last three years, she has lived in Watertown, Wisconsin, near her son.

After mass there will be a luncheon served in the Parish Hall. Leila will be laid to rest next to Francis in the Ishpeming Cemetery later in the year. Leila's obituary will be posted at beyondshades.com where family and friends may leave a note of remembrance.

Robert L. Richards

WEST BLOOMFIELD TWP, MI - Robert L. Richards, age 87, passed away January 8, 2020.

Bob was born in Marquette, MI and served in the U.S. Coast Guard. He graduated from Northern Michigan University, where he met the love of his life, Judy, and was a devoted high school math teacher. Bob and Judy had two children, David and Lori.



ROBERT RICHARDS

ing uncle of Barth (Cheryl), Lincoln (Barbara) Jory and James (Annette) Jory. Also survived by brother-in-law, James L. (Mary) Jory.

Memorial gathering Monday, Jan. 13, 10:30 am until time of Memorial Mass, 11 am, at Prince of Peace Catholic Church, 4300 Walnut Lake Rd., West Bloomfield. West Bloomfield, MI 48304. www.westbloomfield.org

Kimberlie Dawn Newton

FOWLERVILLE, MI - Kimberlie Dawn Newton, age 47, of Fowlerville, AL, passed away at her home late Wednesday afternoon, December 18, 2019, while surrounded by her loving family. Born on December 5, 1972, in Ishpeming, she was the daughter of Clarence M. and Sherrie L. (Sinnaway) Willey. Kim was a 1991 graduate of Negaunee High School and had attended Cleary University. She loved her job and had formerly been employed as a practice manager for Howell Dental Excellence. Beloved wife of Jason T. Newton whom she married in Negaunee on July 4, 1991. Loving mother of Gerri Newton of Fowlerville, AL, so survived, by her parents, Clarence and Sherrie Willey of Negaunee and brother, Michael Willey of Harburt.



KIMBERLIE NEWTON

A celebration of life will take place at Mitchell United Methodist Church, Negaunee, in the Spring.

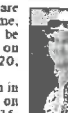
Memorial contributions are suggested to the Barbara Ann Karmanos Cancer Institute. Contributions - NEDIPS, 4100 John R. Detroit, MI 48201 - 2013 - <https://www.karmanos.org/donations/?fund=mi> mory.

Laura B. Brann

NORTHGLENN, CO - Laura Belle Brann, 84, a resident of Avonmore Transitional Care Nursing Home, went home to be with the Lord on November 20, 2019.

Laura was born in Auburn, Maine on January 26, 1935. She was the first of three daughters born to Harold and Marjorie Ann Allard. Laura grew up in Brunswick, Maine and graduated valedictorian of the Brunswick High School Class of 1952. On February 4, 1956, Laura married Gerald K. Swain, and they lived in East Brunswick. They had three children: Brian, Brenda, and Barbara. Gerald passed away in April 1977. Later in life Laura married Leonard C. Brann, and they had a daughter, Pamela.

Laura was involved in many things in Brunswick. She coached Ponyball Softball; served as president of the Will Ryder Bowling League (where she was also an avid bowler); sang and performed in the annual American Cancer Society Crusade Capers; socialized at the 55 Plus Center; volunteered at the Maine State Museum; volunteered at the soup kitchen; and was involved in local politics. She had a deep passion for writing letters to the editor in the local newspaper, The Times Record. She loved watching the New England Patriots football games. Laura



LAURA BRANN

loved the Brunswick area and lived there for most of her life before moving to Colorado in 2007 to be closer to her youngest daughter, Pam and family.

Laura is survived by her sister, Nellie Berry of Ewa Beach, Hawaii; four children: Brian Swain of San Antonio, Texas; Brenda (Brian) Veale of Gwin, Michigan; Barbara Rollins and companion, Jim McDuff of Brunswick, Maine; and Pamela (Rob) Migliore of Thornton, Colorado. She has numerous nieces and nephews. Laura was Nana to eight grandchildren: Brandon and Bradley Veale and Breana (Martin) Kovarik; Wendell and John Bailey; James Rollins; and Susan and Jackson Migliore. Laura was Super Nana to nine great grandchildren: Harper, Theo, Tiffany, Julia, Treva, Keaton, Austen, Lilie, and Gabriel.

Laura was predeceased by her parents; a sister, Audrey; a nephew, Jimmy; a son-in-law, Mike Rollins; and her husband of 16 years, Gerald Swain.

A memorial service is planned for Spring 2020 in the Brunswick area. In the meantime, she will be in the Harding Cemetery following the service. In lieu of flowers, memorial donations may be made to the Midcoast Humane Society in Brunswick, Maine or at <http://bit.ly/midcoasthumane.org/donate>.

Sharon Larson

ISHPEMING, MI - Sharon Marie Larson, 62, of Ishpeming, passed away peacefully Tuesday afternoon, January 7, 2020, at UP Health System Bell with her loving family by her side.

Sharon was born August 13, 1957, to Louis Joseph and Mary Ann (Kangas) Swenor and graduated from Negaunee High School, Class of 1975. She married, Steven Roy Larson, on December 18, 1981 and together they raised three children. She was a loving and devoted homemaker.

In her free time, Sharon enjoyed gardening and flowers, watching hummingbirds, coffee with her friends and daughter Stephanie, long conversations with her son Eli and visiting with her grandsons and she loved watching Gunsmoke. She enjoyed hearing the adventures of her daughters, Amber and son-in-law,



SHARON LARSON

Andrew and enjoyed listening to music while cleaning, especially Tom Petty. Helping people and taking care of others truly made her happy. She was the rock of the family and a mother figure to many.

Surviving are her children: Eli Larson of Cadillac, Stephanie Larson of Ishpeming, Amber (Andrew) Hormala of Cedar City, Utah; grandsons, Thomas and Talan and numerous nieces and nephews.

She was preceded in death by her parents; her husband, Steven in 1999; an infant son, Steven Jr. and three brothers: Thomas, Michael and Steven "Squeaker" Swenor.

Honoring Sharon's wishes, a private family celebration will be held. Interment will take place at Bakkala Cemetery.

Sharon's memorial page may be viewed at kroskey-funeralhome.com

Weather

Marquette and vicinity: Saturday, much colder. Cloudy with numerous snow showers. High blowing snow. Some accumulation around an inch. Highs around 15. North winds 15 to 20 mph becoming westerly in the afternoon. Chance of snow 70 percent. Saturday night, mostly cloudy with a 50 percent chance of snow showers. Patchy blowing snow. Low around 12. Northeast winds 10 to 20 mph. Sunday, a 50 percent chance of snow showers in the morning. Cloudy. Highs around 18. Northeast winds 5 to 15 mph. Sunday night, a chance of snow showers in the evening, then a chance of snow showers in the afternoon. Cloudy. Highs around 32. Chance of snow 70 percent. Tuesday night, a chance of snow showers in the evening. Cloudy. Low 17 to 22. Chance of snow 50 percent.

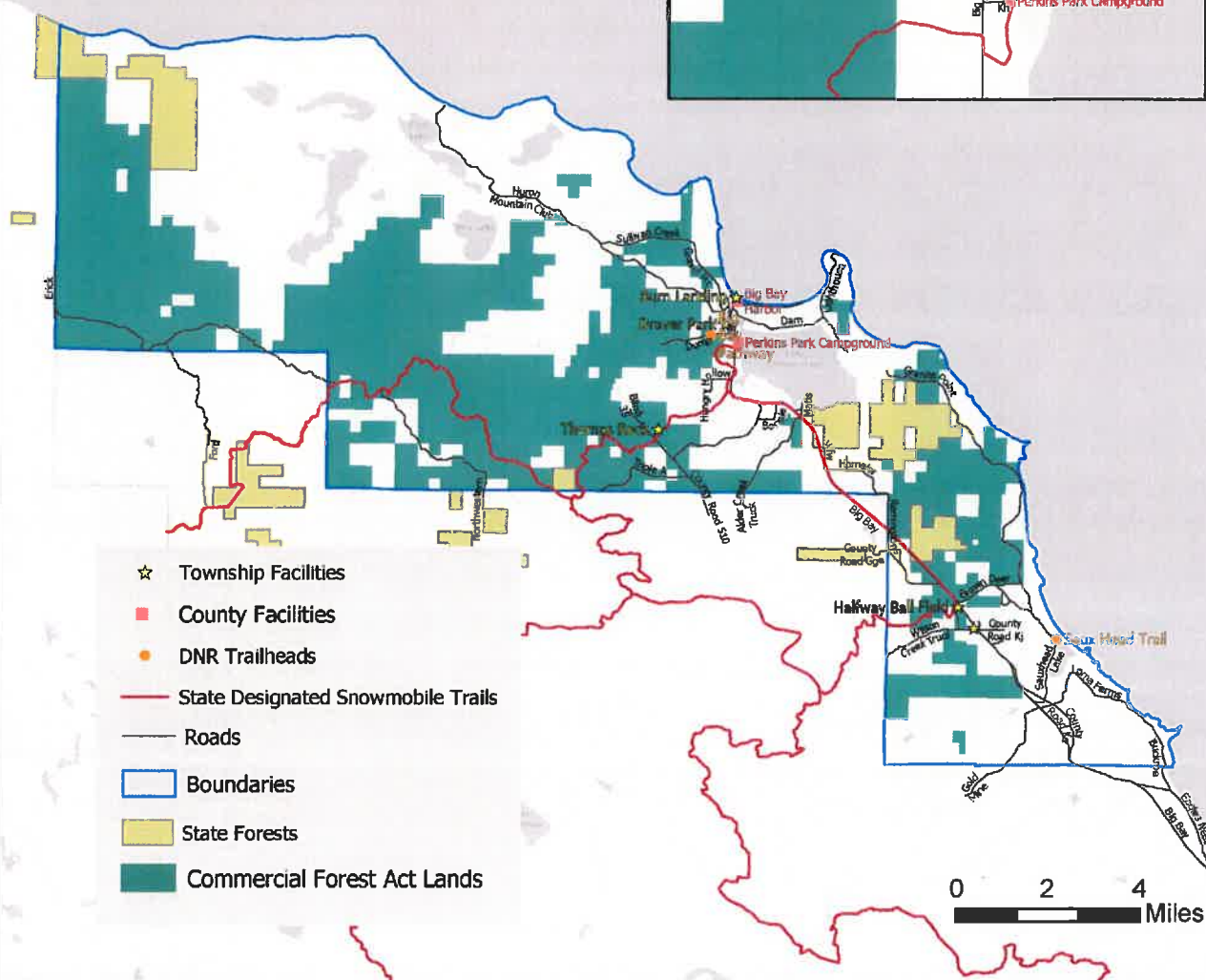
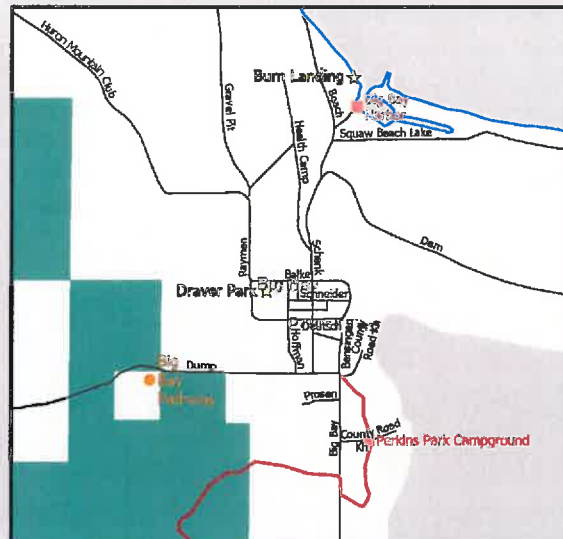
Extended forecast: Monday, mostly cloudy. Highs around 26. Monday night, a 50 percent chance of snow showers over night. Cloudy. Low around 19. Tuesday, snow showers likely in the morning, then a chance of snow showers in the afternoon. Cloudy. Highs around 32. Chance of snow 70 percent. Tuesday night, a chance of snow showers in the evening. Cloudy. Low 17 to 22. Chance of snow 50 percent.

Lake Superior: Saturday, northeast wind 20 to 25 knots. Gests up to 33 knots. Sunday, northeast wind 15 to 20 knots. Gests up to 33 knots. Monday, northeast wind 15 to 20 knots. Gests up to 33 knots. Tuesday, northeast wind 15 to 20 knots. Gests up to 33 knots. Wednesday, northeast wind 15 to 20 knots. Gests up to 33 knots. Thursday, northeast wind 15 to 20 knots. Gests up to 33 knots. Friday, northeast wind 15 to 20 knots. Gests up to 33 knots. Saturday, northeast wind 15 to 20 knots. Gests up to 33 knots. Sunday, northeast wind 15 to 20 knots. Gests up to 33 knots. Monday, northeast wind 15 to 20 knots. Gests up to 33 knots. Tuesday, northeast wind 15 to 20 knots. Gests up to 33 knots. Wednesday, northeast wind 15 to 20 knots. Gests up to 33 knots. Thursday, northeast wind 15 to 20 knots. Gests up to 33 knots. Friday, northeast wind 15 to 20 knots. Gests up to 33 knots. Saturday, northeast wind 15 to 20 knots. Gests up to 33 knots. Sunday, northeast wind 15 to 20 knots. Gests up to 33 knots. Monday, northeast wind 15 to 20 knots. Gests up to 33 knots. Tuesday, northeast wind 15 to 20 knots. Gests up to 33 knots. Wednesday, northeast wind 15 to 20 knots. Gests up to 33 knots. Thursday, northeast wind 15 to 20 knots. Gests up to 33 knots. Friday, northeast wind 15 to 20 knots. Gests up to 33 knots. Saturday, northeast wind 15 to 20 knots. Gests up to 33 knots. Sunday, northeast wind 15 to 20 knots. Gests up to 33 knots. Monday, northeast wind 15 to 20 knots. Gests up to 33 knots. Tuesday, northeast wind 15 to 20 knots. Gests up to 33 knots. Wednesday, northeast wind 15 to 20 knots. Gests up to 33 knots. Thursday, northeast wind 15 to 20 knots. Gests up to 33 knots. Friday, northeast wind 15 to 20 knots. Gests up to 33 knots. Saturday, northeast wind 15 to 20 knots. Gests up to 33 knots. Sunday, northeast wind 15 to 20 knots. Gests up to 33 knots. Monday, northeast wind 15 to 20 knots. Gests up to 33 knots. Tuesday, northeast wind 15 to 20 knots. Gests up to 33 knots. Wednesday, northeast wind 15 to 20 knots. Gests up to 33 knots. Thursday, northeast wind 15 to 20 knots. Gests up to 33 knots. Friday, northeast wind 15 to 20 knots. Gests up to 33 knots. Saturday, northeast wind 15 to 20 knots. Gests up to 33 knots. Sunday, northeast wind 15 to 20 knots. Gests up to 33 knots. Monday, northeast wind 15 to 20 knots. Gests up to 33 knots. Tuesday, northeast wind 15 to 20 knots. Gests up to 33 knots. Wednesday, northeast wind 15 to 20 knots. Gests up to 33 knots. Thursday, northeast wind 15 to 20 knots. Gests up to 33 knots. Friday, northeast wind 15 to 20 knots. Gests up to 33 knots. Saturday, northeast wind 15 to 20 knots. Gests up to 33 knots. Sunday, northeast wind 15 to 20 knots. Gests up to 33 knots. Monday, northeast wind 15 to 20 knots. Gests up to 33 knots. Tuesday, northeast wind 15 to 20 knots. Gests up to 33 knots. Wednesday, northeast wind 15 to 20 knots. Gests up to 33 knots. Thursday, northeast wind 15 to 20 knots. Gests up to 33 knots. Friday, northeast wind 15 to 20 knots. Gests up to 33 knots. Saturday, northeast wind 15 to 20 knots. Gests up to 33 knots. Sunday, northeast wind 15 to 20 knots. Gests up to 33 knots. Monday, northeast wind 15 to 20 knots. Gests up to 33 knots. Tuesday, northeast wind 15 to 20 knots. Gests up to 33 knots. Wednesday, northeast wind 15 to 20 knots. Gests up to 33 knots. Thursday, northeast wind 15 to 20 knots. Gests up to 33 knots. Friday, northeast wind 15 to 20 knots. Gests up to 33 knots. Saturday, northeast wind 15 to 20 knots. Gests up to 33 knots. Sunday, northeast wind 15 to 20 knots. Gests up to 33 knots. Monday, northeast wind 15 to 20 knots. Gests up to 33 knots. Tuesday, northeast wind 15 to 20 knots. Gests up to 33 knots. Wednesday, northeast wind 15 to 20 knots. Gests up to 33 knots. Thursday, northeast wind 15 to 20 knots. Gests up to 33 knots. Friday, northeast wind 15 to 20 knots. Gests up to 33 knots. Saturday, northeast wind 15 to 20 knots. Gests up to 33 knots. Sunday, northeast wind 15 to 20 knots. Gests up to 33 knots. Monday, northeast wind 15 to 20 knots. Gests up to 33 knots. Tuesday, northeast wind 15 to 20 knots. Gests up to 33 knots. Wednesday, northeast wind 15 to 20 knots. Gests up to 33 knots. Thursday, northeast wind 15 to 20 knots. Gests up to 33 knots. Friday, northeast wind 15 to 20 knots. Gests up to 33 knots. Saturday, northeast wind 15 to 20 knots. Gests up to 33 knots. Sunday, northeast wind 15 to 20 knots. Gests up to 33 knots. Monday, northeast wind 15 to 20 knots. Gests up to 33 knots. Tuesday, northeast wind 15 to 20 knots. Gests up to 33 knots. Wednesday, northeast wind 15 to 20 knots. Gests up to 33 knots. Thursday, northeast wind 15 to 20 knots. Gests up to 33 knots. Friday, northeast wind 15 to 20 knots. Gests up to 33 knots. Saturday, northeast wind 15 to 20 knots. Gests up to 33 knots. Sunday, northeast wind 15 to 20 knots. Gests up to 33 knots. Monday, northeast wind 15 to 20 knots. Gests up to 33 knots. Tuesday, northeast wind 15 to 20 knots. Gests up to 33 knots. Wednesday, northeast wind 15 to 20 knots. Gests up to 33 knots. Thursday, northeast wind 15 to 20 knots. Gests up to 33 knots. Friday, northeast wind 15 to 20 knots. Gests up to 33 knots. Saturday, northeast wind 15 to 20 knots. Gests up to 33 knots. Sunday, northeast wind 15 to 20 knots. Gests up to 33 knots. Monday, northeast wind 15 to 20 knots. Gests up to 33 knots. Tuesday, northeast wind 15 to 20 knots. Gests up to 33 knots. Wednesday, northeast wind 15 to 20 knots. Gests up to 33 knots. Thursday, northeast wind 15 to 20 knots. Gests up to 33 knots. Friday, northeast wind 15 to 20 knots. Gests up to 33 knots. Saturday, northeast wind 15 to 20 knots. Gests up to 33 knots. Sunday, northeast wind 15 to 20 knots. Gests up to 33 knots. Monday, northeast wind 15 to 20 knots. Gests up to 33 knots. Tuesday, northeast wind 15 to 20 knots. Gests up to 33 knots. Wednesday, northeast wind 15 to 20 knots. Gests up to 33 knots. Thursday, northeast wind 15 to 20 knots. Gests up to 33 knots. Friday, northeast wind 15 to 20 knots. Gests up to 33 knots. Saturday, northeast wind 15 to 20 knots. Gests up to 33 knots. Sunday, northeast wind 15 to 20 knots. Gests up to 33 knots. Monday, northeast wind 15 to 20 knots. Gests up to 33 knots. Tuesday, northeast wind 15 to 20 knots. Gests up to 33 knots. Wednesday, northeast wind 15 to 20 knots. Gests up to 33 knots. Thursday, northeast wind 15 to 20 knots. Gests up to 33 knots. Friday, northeast wind 15 to 20 knots. Gests up to 33 knots. Saturday, northeast wind 15 to 20 knots. Gests up to 33 knots. Sunday, northeast wind 15 to 20 knots. Gests up to 33 knots. Monday, northeast wind 15 to 20 knots. Gests up to 33 knots. Tuesday, northeast wind 15 to 20 knots. Gests up to 33 knots. Wednesday, northeast wind 15 to 20 knots. Gests up to 33 knots. Thursday, northeast wind 15 to 20 knots. Gests up to 33 knots. Friday, northeast wind 15 to 20 knots. Gests up to 33 knots. Saturday, northeast wind 15 to 20 knots. Gests up to 33 knots. Sunday, northeast wind 15 to 20 knots. Gests up to 33 knots. Monday, northeast wind 15 to 20 knots. Gests up to 33 knots. Tuesday, northeast wind 15 to 20 knots. Gests up to 33 knots. Wednesday, northeast wind 15 to 20 knots. Gests up to 33 knots. Thursday, northeast wind 15 to 20 knots. Gests up to 33 knots. Friday, northeast wind 15 to 20 knots. Gests up to 33 knots. Saturday, northeast wind 15 to 20 knots. Gests up to 33 knots. Sunday, northeast wind 15 to 20 knots. Gests up to 33 knots. Monday, northeast wind 15 to 20 knots. Gests up to 33 knots. Tuesday, northeast wind 15 to 20 knots. Gests up to 33 knots. Wednesday, northeast wind 15 to 20 knots. Gests up to 33 knots. Thursday, northeast wind 15 to 20 knots. Gests up to 33 knots. Friday, northeast wind 15 to 20 knots. Gests up to 33 knots. Saturday, northeast wind 15 to 20 knots. Gests up to 33 knots. Sunday, northeast wind 15 to 20 knots. Gests up to 33 knots. Monday, northeast wind 15 to 20 knots. Gests up to 33 knots. Tuesday, northeast wind 15 to 20 knots. Gests up to 33 knots. Wednesday, northeast wind 15 to 20 knots. Gests up to 33 knots. Thursday, northeast wind 15 to 20 knots. Gests up to 33 knots. Friday, northeast wind 15 to 20 knots. Gests up to 33 knots. Saturday, northeast wind 15 to 20 knots. Gests up to 33 knots. Sunday, northeast wind 15 to 20 knots. Gests up to 33 knots. Monday, northeast wind 15 to 20 knots. Gests up to 33 knots. Tuesday, northeast wind 15 to 20 knots. Gests up to 33 knots. Wednesday, northeast wind 15 to 20 knots. Gests up to 33 knots. Thursday, northeast wind 15 to 20 knots. Gests up to 33 knots. Friday, northeast wind 15 to 20 knots. Gests up to 33 knots. Saturday, northeast wind 15 to 20 knots. Gests up to 33 knots. Sunday, northeast wind 15 to 20 knots. Gests up to 33 knots. Monday, northeast wind 15 to 20 knots. Gests up to 33 knots. Tuesday, northeast wind 15 to 20 knots. Gests up to 33 knots. Wednesday, northeast wind 15 to 20 knots. Gests up to 33 knots. Thursday, northeast wind 15 to 20 knots. Gests up to 33 knots. Friday, northeast wind 15 to 20 knots. Gests up to 33 knots. Saturday, northeast wind 15 to 20 knots. Gests up to 33 knots. Sunday, northeast wind 15 to 20 knots. Gests up to 33 knots. Monday, northeast wind 15 to 20 knots. Gests up to 33 knots. Tuesday, northeast wind 15 to 20 knots. Gests up to 33 knots. Wednesday, northeast wind 15 to 20 knots. Gests up to 33 knots. Thursday, northeast wind 15 to 20 knots. Gests up to 33 knots. Friday, northeast wind 15 to 20 knots. Gests up to 33 knots. Saturday, northeast wind 15 to 20 knots. Gests up to 33 knots. Sunday, northeast wind 15 to 20 knots. Gests up to 33 knots. Monday, northeast wind 15 to 20 knots. Gests up to 33 knots. Tuesday, northeast wind 15 to 20 knots. Gests up to 33 knots. Wednesday, northeast wind 15 to 20 knots. Gests up to 33 knots. Thursday, northeast wind 15 to 20 knots. Gests up to 33 knots. Friday, northeast wind 15 to 20 knots. Gests up to 33 knots. Saturday, northeast wind 15 to 20 knots. Gests up to 33 knots. Sunday, northeast wind 15 to 20 knots. Gests up to 33 knots. Monday, northeast wind 15 to 20 knots. Gests up to 33 knots. Tuesday, northeast wind 15 to 20 knots. Gests up to 33 knots. Wednesday, northeast wind 15 to 20 knots. Gests up to 33 knots. Thursday, northeast wind 15 to 20 knots. Gests up to 33 knots. Friday, northeast wind 15 to 20 knots. Gests up to 33 knots. Saturday, northeast wind 15 to 20 knots. Gests up to 33 knots. Sunday, northeast wind 15 to 20 knots. Gests up to 33 knots. Monday, northeast wind 15 to 20 knots. Gests up to 33 knots. Tuesday, northeast wind 15 to 20 knots. Gests up to 33 knots. Wednesday, northeast wind 15 to 20 knots. Gests up to 33 knots. Thursday, northeast wind 15 to 20 knots. Gests up to 33 knots. Friday, northeast wind 15 to 20 knots. Gests up to 33 knots. Saturday, northeast wind 15 to 20 knots. Gests up to 33 knots. Sunday, northeast wind 15 to 20 knots. Gests up to 33 knots. Monday, northeast wind 15 to 20 knots. Gests up to 33 knots. Tuesday, northeast wind 15 to 20 knots. Gests up to 33 knots. Wednesday, northeast wind 15 to 20 knots. Gests up to 33 knots. Thursday, northeast wind 15 to 20 knots. Gests up to 33 knots. Friday, northeast wind 15 to 20 knots. Gests up to 33 knots. Saturday, northeast wind 15 to 20 knots. Gests up to 33 knots. Sunday, northeast wind 15 to 20 knots. Gests up to 33 knots. Monday, northeast wind 15 to 20 knots. Gests up to 33 knots. Tuesday, northeast wind 15 to 20 knots. Gests up to 33 knots. Wednesday, northeast wind 15 to 20 knots. Gests up to 33 knots. Thursday, northeast wind 15 to 20 knots. Gests up to 33 knots. Friday, northeast wind 15 to 20 knots. Gests up to 33 knots. Saturday, northeast wind 15 to 20 knots. Gests up to 33 knots. Sunday, northeast wind 15 to 20 knots. Gests up to 33 knots. Monday, northeast wind 15 to 20 knots. Gests up to 33 knots. Tuesday, northeast wind 15 to 20 knots. Gests up to 33 knots. Wednesday, northeast wind 15 to 20 knots. Gests up to 33 knots. Thursday, northeast wind 15 to 20 knots. Gests up to 33 knots. Friday, northeast wind 15 to 20 knots. Gests up to 33 knots. Saturday, northeast wind 15 to 20 knots. Gests up to 33 knots. Sunday, northeast wind 15 to 20 knots. Gests up to 33 knots. Monday, northeast wind 15 to 20 knots. Gests up to 33 knots. Tuesday, northeast wind 15 to 20 knots. Gests up to 33 knots. Wednesday, northeast wind 15 to 20 knots. Gests up to 33 knots. Thursday, northeast wind 15 to 20 knots. Gests up to 33 knots. Friday, northeast wind 15 to 20 knots. Gests up to 33 knots. Saturday, northeast wind 15 to 20 knots. Gests up to 33 knots. Sunday, northeast wind 15 to 20 knots. Gests up to 33 knots. Monday, northeast wind 15 to 20 knots. Gests up to 33 knots. Tuesday, northeast wind 15 to 20 knots. Gests up to 33 knots. Wednesday, northeast wind 15 to 20 knots. Gests up to 33 knots. Thursday, northeast wind 15 to 20 knots. Gests up to 33 knots. Friday, northeast wind 15 to 20 knots. Gests up to 33 knots. Saturday, northeast wind 15 to 20 knots. Gests up to 33 knots. Sunday, northeast wind 15 to 20 knots. Gests up to 33 knots. Monday, northeast wind 15 to 20 knots. Gests up to 33 knots. Tuesday, northeast wind 15 to 20 knots. Gests up to 33 knots. Wednesday, northeast wind 15 to 20 knots. Gests up to 33 knots. Thursday, northeast wind 15 to 20 knots. Gests up to 33 knots. Friday, northeast wind 15 to 20 knots. Gests up to 33 knots. Saturday, northeast wind 15 to 20 knots. Gests up to 33 knots. Sunday, northeast wind 15 to 20 knots. Gests up to 33 knots. Monday, northeast wind 15 to 20 knots. Gests up to 33 knots. Tuesday, northeast wind 15 to 20 knots. Gests up to 33 knots. Wednesday, northeast wind 15 to 20 knots. Gests up to 33 knots. Thursday, northeast wind 15 to 20 knots. Gests up to 33 knots. Friday, northeast wind 15 to 20 knots. Gests up to 33 knots. Saturday, northeast wind 15 to 20 knots. Gests up to 33 knots. Sunday, northeast wind 15 to 20 knots. Gests up to 33 knots. Monday, northeast wind 15 to 20 knots. Gests up to 33 knots. Tuesday, northeast wind 15 to 20 knots. Gests up to 33 knots. Wednesday, northeast wind 15 to 20 knots. Gests up to 33 knots. Thursday, northeast wind 15 to 20 knots. Gests up to 33 knots. Friday, northeast wind 15 to 20 knots. Gests up to 33 knots. Saturday, northeast wind 15 to 20 knots. Gests up to 33 knots. Sunday, northeast wind 15 to 20 knots. Gests up to 33 knots. Monday, northeast wind 15 to 20 knots. Gests up to 33 knots. Tuesday, northeast wind 15 to 20 knots. Gests up to 33 knots. Wednesday, northeast wind 15 to 20 knots. Gests up to 33 knots. Thursday, northeast wind 15 to 20 knots. Gests up to 33 knots. Friday, northeast wind 15 to 20 knots. Gests up to 33 knots. Saturday, northeast wind 15 to 20 knots. Gests up to 33 knots. Sunday, northeast wind 15 to 20 knots. Gests up to 33 knots. Monday, northeast wind 15 to 20 knots. Gests up to 33 knots. Tuesday, northeast wind 15 to 20 knots. Gests up to 33 knots. Wednesday, northeast wind 15 to 20 knots. Gests up to 33 knots. Thursday, northeast wind 15 to 20 knots. Gests up to 33 knots. Friday, northeast wind 15 to 20 knots. Gests up to 33 knots. Saturday, northeast wind 15 to 20 knots. Gests up to 33 knots. Sunday, northeast wind 15 to 20 knots. Gests up to 33 knots. Monday, northeast wind 15 to 20 knots. Gests up to 33 knots. Tuesday, northeast wind 15 to 20 knots. Gests up to 33 knots. Wednesday, northeast wind 15 to 20 knots. Gests up to 33 knots. Thursday, northeast wind 15 to 20 knots. Gests up to 33 knots. Friday, northeast wind 15 to 20 knots. Gests up to 33 knots. Saturday, northeast wind 15 to 20 knots. Gests up to 33 knots. Sunday, northeast wind 15 to 20 knots. Gests up to 33 knots. Monday, northeast wind 15 to 20 knots. Gests up to 33 knots. Tuesday, northeast wind 15 to 20 knots. Gests up to 33 knots. Wednesday, northeast wind 15 to 20 knots. Gests up to 33 knots. Thursday, northeast wind 15 to 20 knots. Gests up to 33 knots. Friday, northeast wind 15 to 20 knots. Gests up to 33 knots. Saturday, northeast wind 15 to 20 knots. Gests up to 33 knots. Sunday, northeast wind 15 to 20 knots. Gests up to 33 knots. Monday, northeast wind 15 to 20 knots. Gests up to 33 knots. Tuesday, northeast wind 15 to 20 knots. Gests up to 33 knots. Wednesday, northeast wind 15 to 20 knots. Gests up to 33 knots. Thursday, northeast wind 15 to 20 knots. Gests up to 33 knots. Friday, northeast wind 15 to 20 knots. Gests up to 33 knots. Saturday, northeast wind 15 to 20 knots. Gests up to 33 knots. Sunday, northeast wind 15 to 20 knots. Gests up to 33 knots. Monday, northeast wind 15 to 20 knots. Gests up to 33 knots. Tuesday, northeast wind 15 to 20 knots. Gests up to 33 knots. Wednesday, northeast wind 15 to 20 knots. Gests up to 33 knots. Thursday, northeast wind 15 to 20 knots. Gests up to 33 knots. Friday, northeast wind 15 to 20 knots. Gests up to 33 knots. Saturday, northeast wind 15 to 20 knots. Gests up to 33 knots. Sunday, northeast wind 15 to 20 knots. Gests up to 33 knots. Monday, northeast wind 15 to 20 knots. Gests up to 33 knots. Tuesday, northeast wind 15 to 20 knots. Gests up to 33 knots. Wednesday, northeast wind 15 to 20 knots. Gests up to 33 knots. Thursday, northeast wind 15 to 20 knots. Gests up to 33 knots. Friday, northeast wind 15 to 20 knots. Gests up to 33 knots. Saturday, northeast wind 15 to 20 knots. Gests up to 33 knots. Sunday, northeast wind 15 to 20 knots. Gests up to 33 knots. Monday, northeast wind 15 to 20 knots. Gests up to 33 knots. Tuesday, northeast wind 15 to 20 knots. Gests up to 33 knots. Wednesday, northeast wind 15 to 20 knots. Gests up to 33 knots. Thursday, northeast wind 15 to 20 knots. Gests up to 33 knots. Friday, northeast wind 15 to 20 knots. Gests up to 33 knots. Saturday, northeast wind 15 to 20 knots. Gests up to 33 knots. Sunday, northeast wind 15 to 20 knots. Gests up to 33 knots. Monday, northeast wind 15 to 20 knots. Gests up to 33 knots. Tuesday, northeast wind 15 to 20 knots. Gests up to 33 knots. Wednesday, northeast wind 15 to 20 knots. Gests up to 33 knots. Thursday, northeast wind 15 to 20 knots. Gests up to 33 knots. Friday, northeast wind 15 to 20 knots. Gests up to 33 knots. Saturday, northeast wind 15 to 20 knots. Gests up to 33 knots. Sunday, northeast wind 15 to 20 knots. Gests up to 33 knots. Monday, northeast wind 15 to 20 knots. Gests up to 33 knots. Tuesday, northeast wind 15 to 20 knots. Gests up to 33 knots. Wednesday, northeast wind 15 to 20 knots. Gests up to 33 knots. Thursday, northeast wind 15 to 20 knots. Gests up to 33 knots. Friday, northeast wind 15 to 20 knots. Gests up to 33 knots. Saturday, northeast wind 15 to 20 knots. Gests up to 33 knots. Sunday, northeast wind 15 to 20 knots. Gests up to 33 knots. Monday, northeast wind 15 to 20 knots. Gests up to 33 knots. Tuesday, northeast wind 15 to 20 knots. Gests up to 33 knots. Wednesday, northeast wind 15 to 20 knots. Gests up to 33 knots. Thursday, northeast wind 15 to 20 knots. Gests up to 33 knots. Friday, northeast wind 15 to 20 knots. Gests up to 33 knots. Saturday, northeast wind 15 to 20 knots. Gests up to 33 knots. Sunday, northeast wind 15 to 20 knots. Gests up to 33 knots. Monday, northeast wind 15 to 20 knots. Gests up to 33 knots. Tuesday, northeast wind 15 to 20 knots. Gests up to 33 knots. Wednesday, northeast wind 15 to 20 knots. Gests up to 33 knots. Thursday, northeast wind 15 to 20 knots. Gests up to 33 knots. Friday, northeast wind 15 to 20 knots. Gests

Appendix D

Map of Recreation Facilities in Powell Township

N



Appendix E



Reports

Powell Township Parks & Rec / Thomas Rock & Draver Park

Section I Introduction

The Powell Township Parks and Recreation Committee is preparing to submit their proposed five-year plan for 2020- 2025 to the community. CUPPAD is assisting with the plan development which includes a review of the accessibility of two Township parks. The Ambassadors Team conducted formal site reviews of the two parks on October 18, 2019. These site visits had to be rescheduled twice due to rain. The team included a college student intern who is a power chair user and his father came as the student's personal assistant; Jessica Mainer, who works for SAIL and generally uses a four-wheel walker for her daily activities; and Lucy Wilcox, SAIL ADA Coordinator.

Superior Alliance for Independent Living (SAIL) is the non-profit Center for Independent Living (CIL) charged with assisting individuals with disabilities and community partners in the fifteen counties of the Upper Peninsula. SAIL has been serving the UP for the last 21 years. SAIL provides ADA site reviews as part of their programming to help achieve local compliance with the standards developed through the Federal Rehabilitation Act of 1973, the Architectural Barriers Act and the American Disabilities Act of 1990 as amended in 2010.

How to Use This Report

The existing Powell Township Recreation Plan was reviewed to prepare this report. The Plan describes the goal of improving Draver Park but this has been deferred until the plan to develop Burns Landing, a historical site right next to Lake Superior and creating access to the beach is completed. Burns Landing is expected to be completed within November 2019. Grants from the DNR have funded a significant portion of the development of Burns Landing and beach access. The Township Board and the Parks and Recreation Committee may be able to turn their attention to other projects and progress on a broader vision of outdoor recreation for the community and visitors.

The SAIL review provides an ADA snapshot in time of Thomas Rock Scenic Overlook and Draver Park & Pavilion. It provides specific information about what actions need to be taken for achieving ADA standards or even looking beyond with universal design as outlined in Appendix C of the DNR grant applications. The evaluation of facilities should be an ongoing process.

This report is not intended to certify compliance or non-compliance with the Americans with Disabilities Act (ADA). Many of the factors which can affect whether or not a facility is ADA Compliant are outside the scope of the evaluation performed by SAIL and may include:

- What date the original construction and any previous renovations?
- What is the cost of accessibility improvements in relation to the overall budget of the facility or its parent organization?
- Is it possible to meet ADA Guidelines given the physical constraints of the property?
- Would meeting the technical Guidelines of the ADA reduce the overall accessibility or usability of the facility?
- If it is not feasible to meet the ADA Guidelines, have alternate means of accessibility or accommodation been implemented?

In addition, compliance with ADA technical Guidelines does not guarantee that a facility is accessible to the maximum extent possible. The ADA is intended as a baseline standard that will result in minimum

Powell Township Parks & Rec / Thomas Rock & Draver Park

accessibility at a majority of facilities. Additions or improvements to a facility may be desired to improve facility functionality for the maximum number of users.

For the purpose of this report, key elements of the sites were evaluated individually. Unless specifically required by the ADA Guidelines, elements were not evaluated in relation to another.

Recommendations are divided into three levels:

- **Level 1** modifications which include staff training, minor modifications to existing equipment, etc.
- **Level 2** modifications include purchasing equipment, significant modifications to existing equipment, or significant research or planning.
- **Level 3** modifications likely require construction and/or significant expense.

Terminology:

Unless otherwise specified, the term “slope” is used to denote a continuous change of level in the direction of travel and the term “cross slope” is used to denote a continuous change of level perpendicular to the direction of travel.

Process:

Thomas Rock was reviewed on 10-18-19 by the full team of reviewers outlined above. After completing that review, the intern who is a power wheelchair user, was not able to continue to the second park due to a serious chill from the wind up on Thomas Rock. Jessica Mainer offered to review Draver Park with the ADA Coordinator so we would have her perspective of accessibility.

The Team members collected measurements on the elements located in the parking lots, the accessible routes connecting public elements and spaces, entry points to structures, and the signage in the park and key areas; the interior of restrooms, including but not limited to and the presence of clear floors spaces in restrooms, and specifications of restroom fixtures. Measurements were recorded and compared to the ADA Guidelines.

Recommendations for each fixture were determined based primarily on elements with a score indicating that it does not meet or exceeds the ADA Guidelines. In some instances, no recommendations for elements which do not meet ADA Guidelines were provided because it was judged likely that alterations were technically unfeasible or not worth the financial investment for a small gain. For the purpose of clarity, each park is reviewed in a separate section.

Section 2 Thomas Rock Scenic Overlook

This park is one of the jewels of the Marquette County. Known by locals as Gobblers Knob, Powell Township recognized the site as an important and popular spot for the local community. Completed over several years with support over two grant cycles is a loop trail up to Thomas Rock from a picnic area with BBQ grills and two accessible toilets. The Overlook was completed approximately 10 years ago. On the Powell Township website under Parks and Recreation is a video made by a resident that shows the dramatic views from the Overlook: <https://powelltownship.org/parks-recreation/>. We suggest viewing the video to experience a walk up to the Rock. The Park has good signage directing people to the trail and information signage at key points of interest around the loop. At the top there is a viewing

Powell Township Parks & Rec / Thomas Rock & Draver Park

area and attractive signage board that informs the viewer of the different vistas seen from the top. The park is not posted for no camping or no evening use. This is based on wanting citizens and tourists to feel free to view the stars or the sunrise. The park has numerous picnic areas with grills and littering or vandalism have rarely been an issue in the past 10 years. Individuals are able to use the park as it is available according to Mother Nature. The trail loop is not plowed but frequently snowshoers have kept the trail open to the top. The Township decided to plow the parking lot during the winter and this allows access by vehicle to the parking lot.

The Parking Lot—There is no signage designating handicapped parking. There is a row parking in front of the two accessible pit toilets. ***Level 1 recommendation: At least one handicap parking space and the necessary access aisle could be designated near the toilets. A single space that is also van accessible would be the most useful. An 11-foot space for the vehicle and a 5-foot access aisle would assure a car or van could park there. Obtain the new Move logo signage for the designated site and assure visibility by the bottom of the sign being 60" above the pavement.***

The Restrooms—The two restrooms have signage that meets ADA standards in designating the toilets as handicapped accessible and the two pit toilets are designated male and female. The pit toilets meet all the required standards. The parking lot is plowed during the winter but the toilets are locked and unavailable. This is a common occurrence in the UP when the severe winters make it untenable to operate the restrooms.

Outdoor Recreation Access Routes (ORARs) --An ORAR is a continuous, unobstructed path that is intended for pedestrian use and that connects accessible elements, spaces, and facilities within camping and picnic facilities and at viewing areas and trailheads. The loop to Thomas Rock Overlook is an ORARS and meeting those standards in the Architectural Barriers Act is the gold standard. The trail loop has a clearly marked beginning with welcoming signage with a description of what is to come. It has a slope that at points is greater than that allowed by the standards yet there is some recognition in the standards that destroying a site is not the solution for accessibility. The standards for trails from the ABA guidelines are: surfaces of trails, passing spaces, and resting intervals must be firm and stable. A firm trail surface resists deformation by indentations. A stable trail surface is not permanently affected by expected weather conditions and can sustain normal wear and tear from the expected uses between planned maintenances. The pathways up to the Rock meet this standard all the way around the loop. Indeed the father accompanying his son commented it was as excellent quality pathway. The pathways are 60 inches wide accommodating passing wheelchairs. Along the trail there are the required resting intervals. When a resting interval is adjacent to an ORAR, it must be at least 60 inches long and at least 36 inches wide.

The slope along the trail is allowed a variance greater than the ADA 2% slope and the standards are provided in the ABA Guidelines for the ORARS. The reviewers did not measure all the slopes around the loop and instead used two people requiring assistance to circumnavigate the Rock. One reviewer uses a powerchair. He was able to complete the loop independently other than occasional consults with his father as to what the best strategy was for several challenging portions of the trail. Jessica Mainer who is a SAIL staff who used a four wheeled walker for the review. She was able to complete the loop and did use the rest intervals several times but did not take a break on one of the many

Powell Township Parks & Rec / Thomas Rock & Draver Park

benches strategically placed around the loop. ***Level 1 recommendation to repair the identified areas where the pathway needs maintenance to meet the requirement to be firm and stable. This may not be necessary at this time as the Overlook is at the end of its seasonal use. This would best be done when the Overlook opens next spring.***

Section 3 Draver Park and Pavilion

Draver Park was built in the mid 80's before the 1991 standards were put into place. And some would say the park was therefore grandfathered in and does not need to make any effort to become accessible. The ADA Amendment in 2010 was enacted to establish that government and private entities did need to show effort in planning readily achievable barrier removal projects to meet the four priorities:

1. accessible approach and entrance;
2. access to goods and services;
3. access to restrooms and
4. any other measures necessary (such as drinking fountains).

Essentially, government and business entities need to revisit accessibility in terms of today's standards and outline a plan as to what changes they could strive for and what is simply out of the realm of financial possibilities. With this in mind, Draver Park needs to be re-evaluated in light of the four priorities listed above.

Parking – The parking at Draver Park is not well defined. Residents and visitors park along the unpaved sections the streets all along the park on several sides. The widest section available for parking is the area across from the Post Office on Hoffman Street where the Pavilion is located. It is possible to create handicapped accessible parking on Hoffman. Currently there is no signage directing the public as to any preferred parking. However, handicapped parking has been designated at the metal barriers that line Hoffman near the Pavilion. The painting of the barrier with blue paint and the two signs placed 60 inches above the pavement for handicapped parking that is van accessible is a good start. The work to mark off the width of the spaces is not yet complete ***Level 1 recommendation is to complete the work to clearly define the two handicapped spaces that are signed as van accessible. The blue paint on the metal barrier should be painted 8 feet for each space and a sign posted no parking at the access space of 8 feet. Also, the grass should be trimmed around the access ramp to the Pavilion and fill used to raise the threshold or the ramp extended another foot.***



Handicapped signage includes Van Accessible on either side of the access route into the Park and the Pavilion area

Powell Township Parks & Rec / Thomas Rock & Draver Park

- **Accessible routes and Goods & Services**—Jessica Mainer was able to access the Pavilion using the ramp but the grass hid that the threshold was actually close to 2 inches high. A wheelchair could probably not have made it up the ramp as easily as her 4-wheeled walker. Once we traveled across the Pavilion to exit on the other side off the ramp there, it was clear that there was no accessible pathway to the snack shack (where the ramp thresholds are 2-3 inches and need to be redone) or to the restrooms or to the playground area. The surface was grassy and sandy and uneven with clumps of grass blocking the progress of the 4-wheeled walker. Navigating through the Park, there was not an accessible path from any area of the park to another. An accessible pathway from the Pavilion, around the edge of the swings, to the snack shack and to the restrooms would need to be created for a wheelchair user to utilize the park other than the Pavilion. ***Recommendations to be made after discussion of the restrooms.***



Exit ramp from Pavilion



Snack Shack ramps not accessible



Signage for Draver Park



View from Restrooms-HIMS& HERS

➤ Restrooms—



HIMS Restroom



HIMS Toilet



Urinal with shared block wall with toilet



HERS Toilet identical HIMS

The door entry to the identical toilets in the HIMS and HERS restrooms are 35" wide which is within the ADA guidelines. However, the required floor space within the stall if constructed before 3-15-12

Powell Township Parks & Rec / Thomas Rock & Draver Park

is 48" wide by 66" long or 48" wide by 56" long depending on the approach to the toilet stall. Neither measurement is found in the toilet stalls of either restroom. There is a second toilet in the women's restroom that is separated by a cement block wall as is the urinal in the men's restroom. ***Level 3 recommendations would be to 1) change both of restrooms into a single toilet rooms with repositioning the sinks and mirrors and towel dispensers or electric hand dryers according to current ADA standards (2010) OR add an addition to the existing building and make it an accessible all gender toilet room. The current bathrooms could remain as is OR an entirely new facility could be developed with added amenities such as showers and changing rooms that would support tourists coming of a day visit or longer period of time.***

The level 3 recommendations that could bring the restrooms into accessibility compliance brings us back to the need for accessible pathways. ***A level 3 recommendation is also made for the pathways to develop several accessible pathways across the park.*** Given the expense of the two Level 3 recommendations for the Park, it is clear Powell Township Parks and Recreation needs public input regarding the remodel of Draver Park. The Park is still a venue for two softball tournaments drawing teams from throughout Marquette County. Currently the Music Concerts in the Park are drawing crowds of up to 400 people of all ages to the Park four times during the summer.

Section 5 Summary

If the Township seeks to improve outdoor recreation for its residents and tourists in order to support the businesses in the community, priorities and specific goals and timeframes to reach those priorities will need to be made. As Burns Landing is completed and major grant projects are completed, how should the Parks and Recreation Committee prioritize its work? More trails? A better more accessible park & playground in the center of the community? Developing better opportunities for fishing, boating, & kayaking? These are topics that need to be addressed by the public not just the Parks and Recreation Committee. The upcoming Parks and Recreation 5-year plan must have the guidance of the community to outline how to move to 2025 with strengthened outdoor recreation activities.

In the coming years, Superior Alliance for Independent Living (SAIL) hopes to continue advising and assisting the Powell Township Parks and Recreation Committee with improving accessibility at the parks they are responsible for maintaining and improving and for new recreation opportunities they may seek. We offer our expertise in helping make future improvements throughout your recreation network.

If you have any questions or concerns about this report please contact me at Lucyw@upsail.org or call 906-236-0543. Thank you for inviting SAIL to assist in the realization of an absolutely accessible Powell Township Recreation Network.

Sincerely,

Lucy Wilcox, Certified ADA Coordinator

