

POWELL TOWNSHIP RESOLUTION

April 24, 2012

TO:

Susan Hedman - EPA Director Region 5
Ralph Metcalfe Federal Building
77 West Jackson Blvd.
Chicago, IL 60604-3590

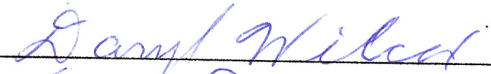
G. Vinson Hellwig - DEQ Air Quality Division Chief
525 West Allegan Street, P.O. Box 30260
Lansing 48909-7760

WHEREAS the Citizens of Powell Township have a right to good air quality and we expect our state and federal agencies to fully protect the health and well-being of all citizens;


WHEREAS citizens deserve to know that the air we breathe and our children breathe is of the highest quality possible;

WHEREAS we need scientific assurance that all processes, at any present or future mines, that could potentially affect the air quality of Powell Township are regulated and that air quality from the mines meet all state and federal guidelines

THEREFORE in response to Citizen's concerns, we the Powell Township Board do ask that the Environmental Protection Agency and or the Michigan Department of Environmental Quality develop an Air Quality Monitoring program in our region, with monitors installed at present and future mine sites, within the community of Big Bay, and at any other sites in Powell Township that these agencies deem appropriate. We ask that the EPA and or the DEQ designate air quality scientists to monitor and maintain this air quality program; ask that the mining companies cover all the costs for the implementation and on-going support for this air quality monitoring program; and that all data and information be available for citizen review




Daryl Wilcox - Powell Township Supervisor




Sara Drury - Powell Township Clerk



Arline Erickson - Powell Township Treasurer



Darlene Turner - Powell Township Trustee



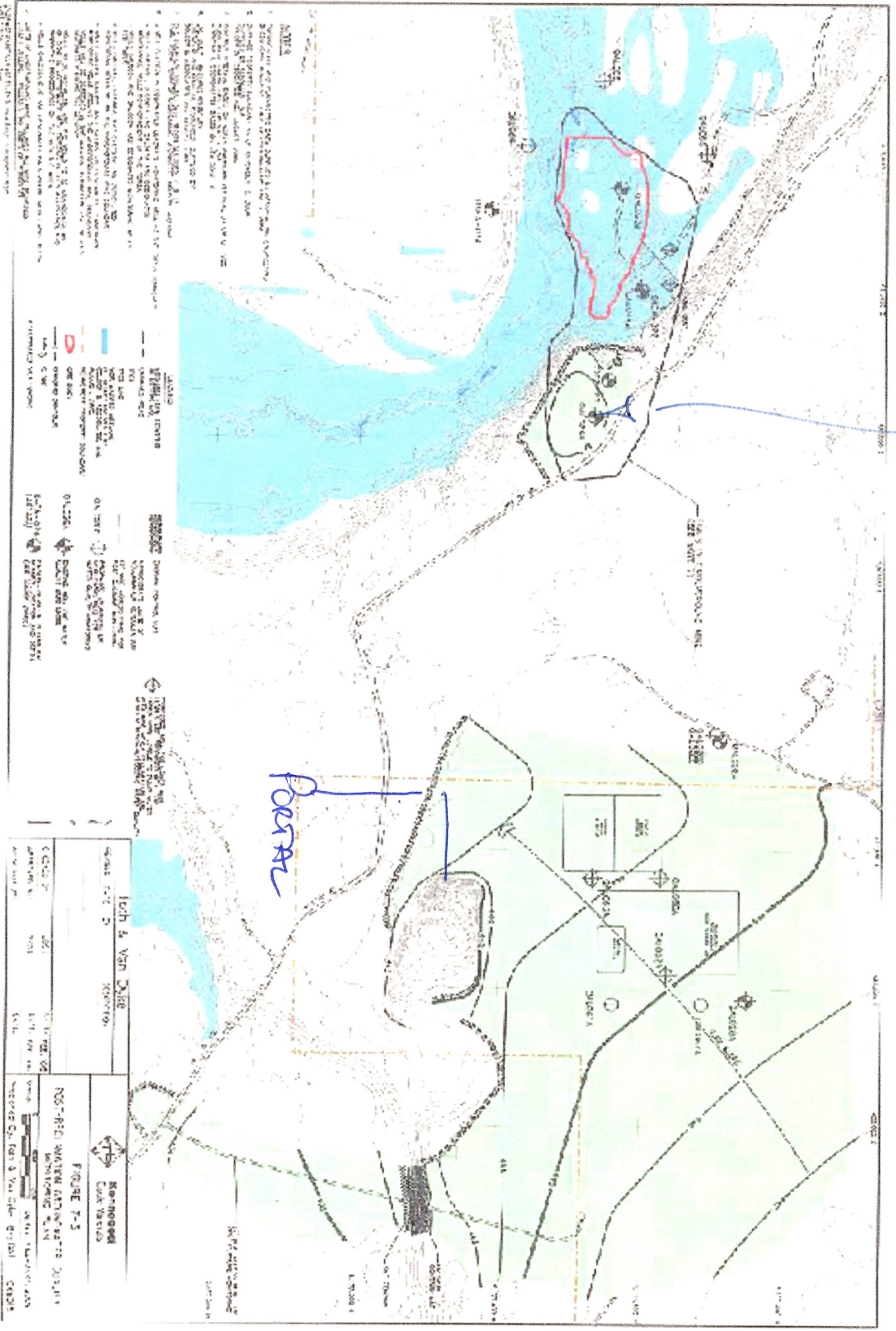
Joseph Stanley - Powell Township Trustee

CC:

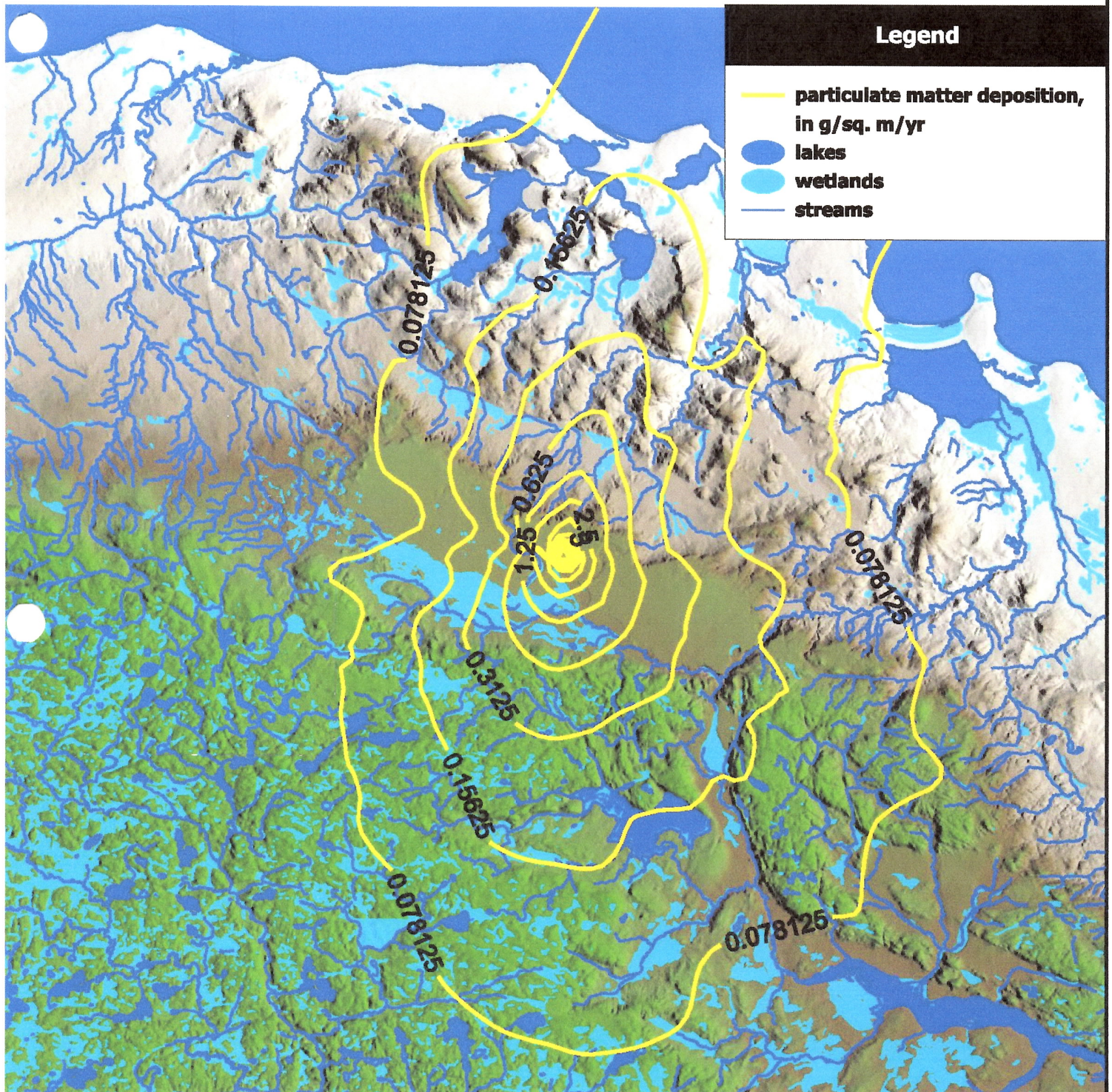
Marquette County Board of Commissioners
234 West Baraga Ave.

Marquette County Health Department
184 US 41

LOCATION OF MAIN VENT AIR RAISE (NOT YET INSTALLED)

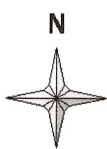


Particulate Matter Deposition from Facility-wide Emission Sources



Legend

- particulate matter deposition, in g/sq. m/yr
- lakes
- wetlands
- streams



Note: Elevation is indicated by color gradation. Greens are the highest elevation and grade into grays, the lowest elevations. Elevation in this area ranges from 590 to 1,975 feet amsl.

Data source: Center for Geographic Information, Michigan Department of Information Technology



